

# Warsztat architekta

---

Czesław Bielecki

Warszawa, 4 stycznia 2012

# Warsztat architekta

---

1. Architektura jako scenariusz
2. *Modus i locus*
3. Między developmentem a designem
4. Skala i materialność architektury
5. Własność i parcelacja
6. Styl transnarodowy
7. Między przeszłością a przyszłością



1



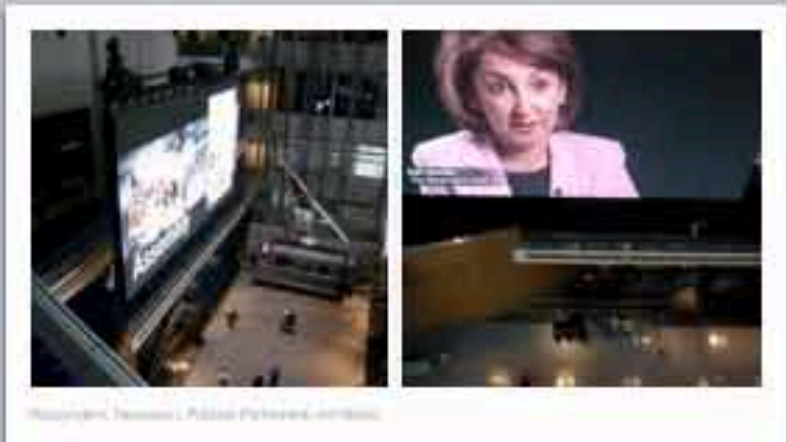
2



3



4



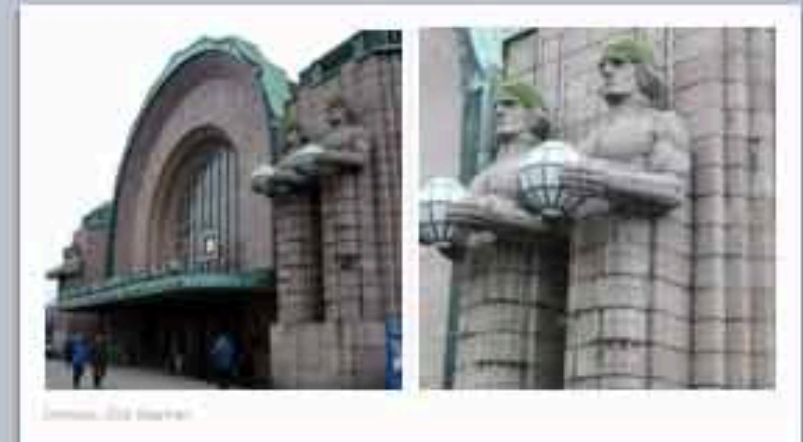
5



6



7



8



9



10



11



12

Poprzednio

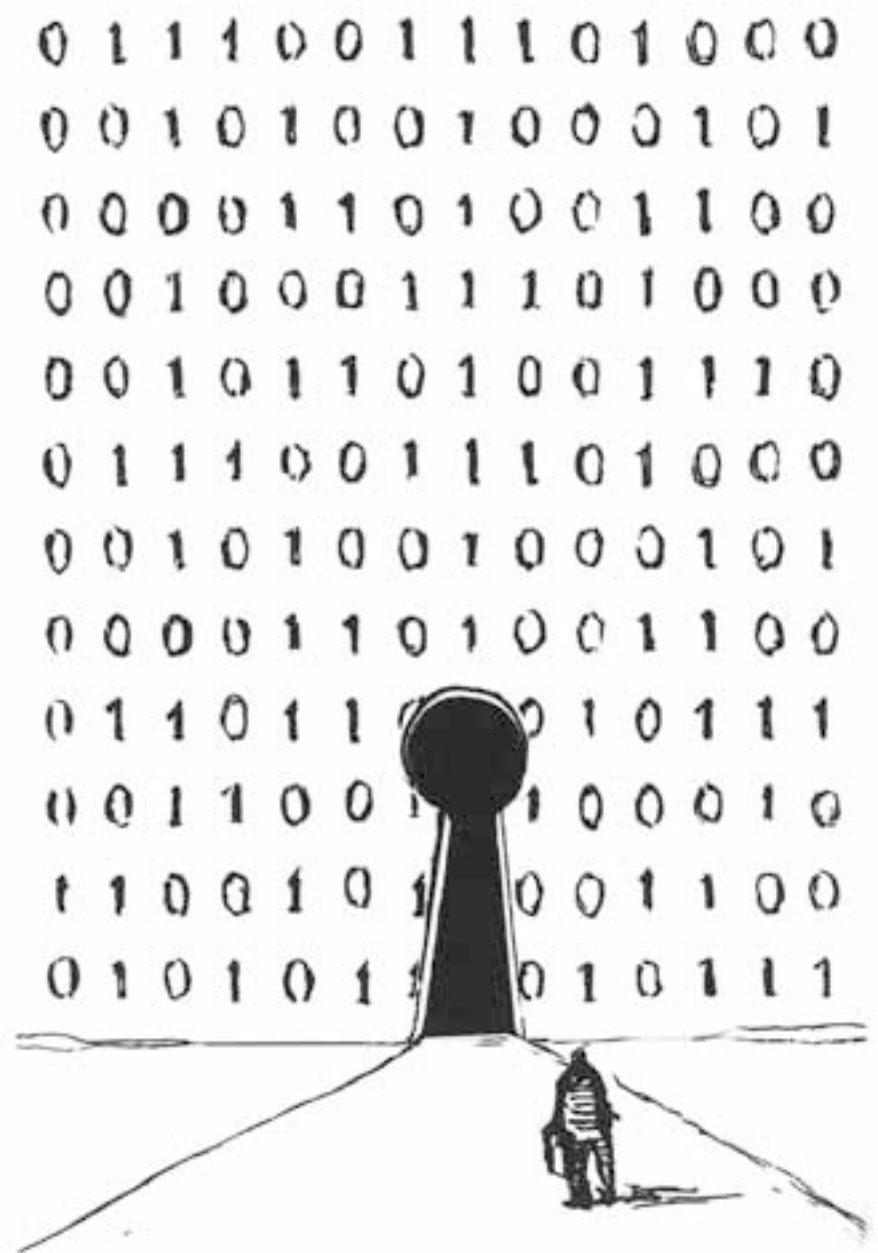
*Modus i locus*

# 3.

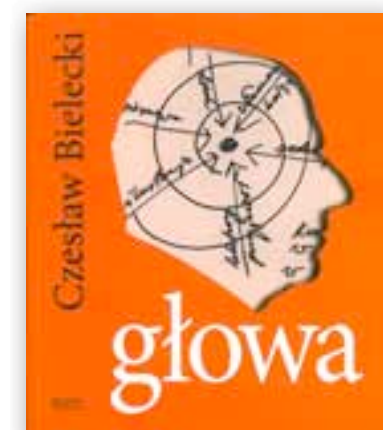
---

Między developmentem a designem

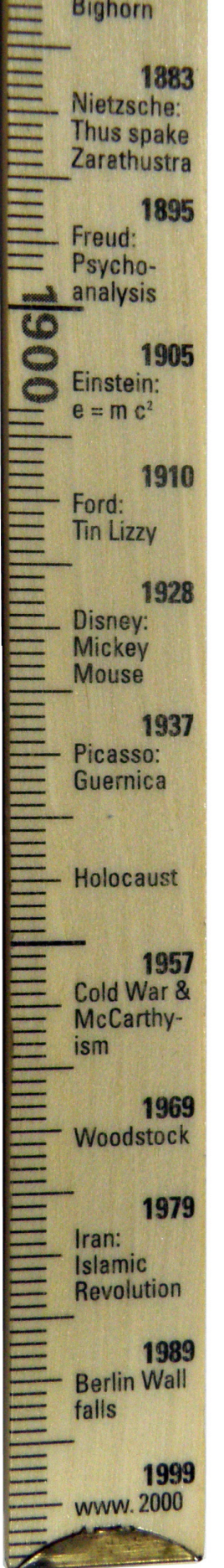
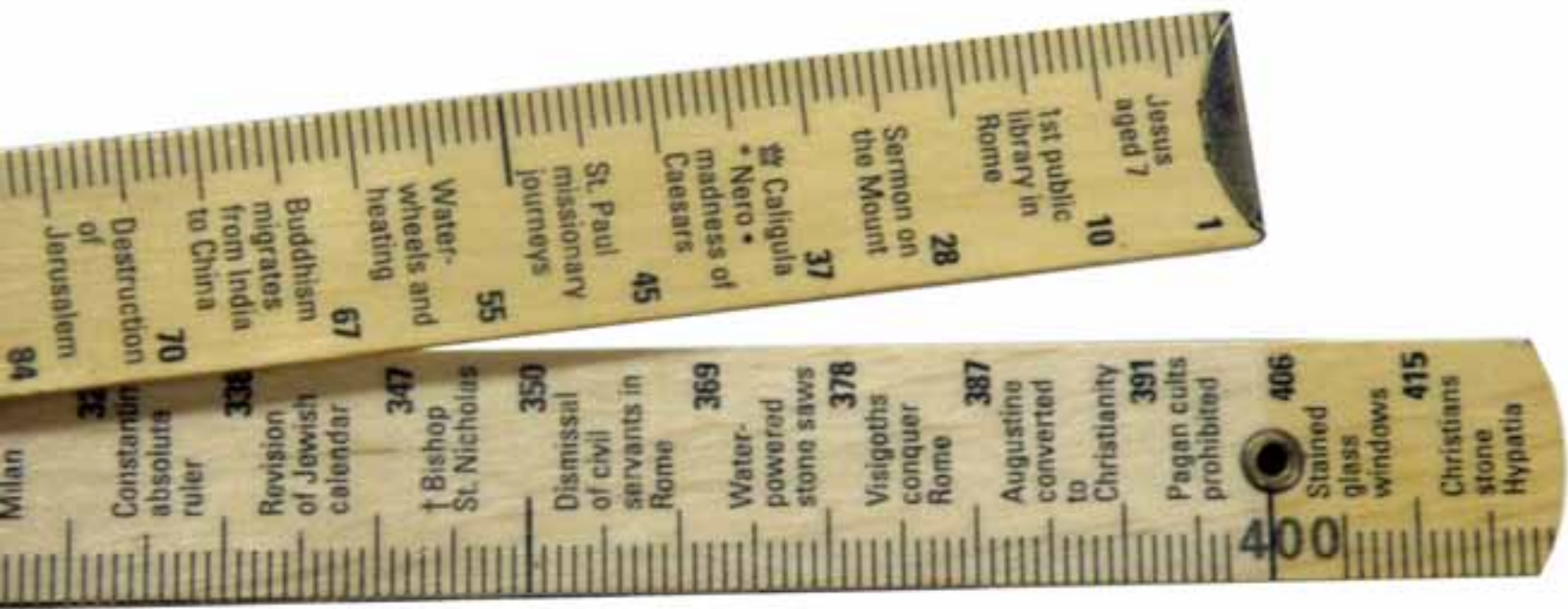




Informacja











001

Household Scissors (1663)  
Zhang Xiaoquan (c.1643-83)  
Hangzhou Zhang Xiaoquan 1663 to present

003

Sharp Shears (1730)  
Designer Unknown  
Burgon & Dal 1730 to present  
Vermorel 1730 to present



001  
-003

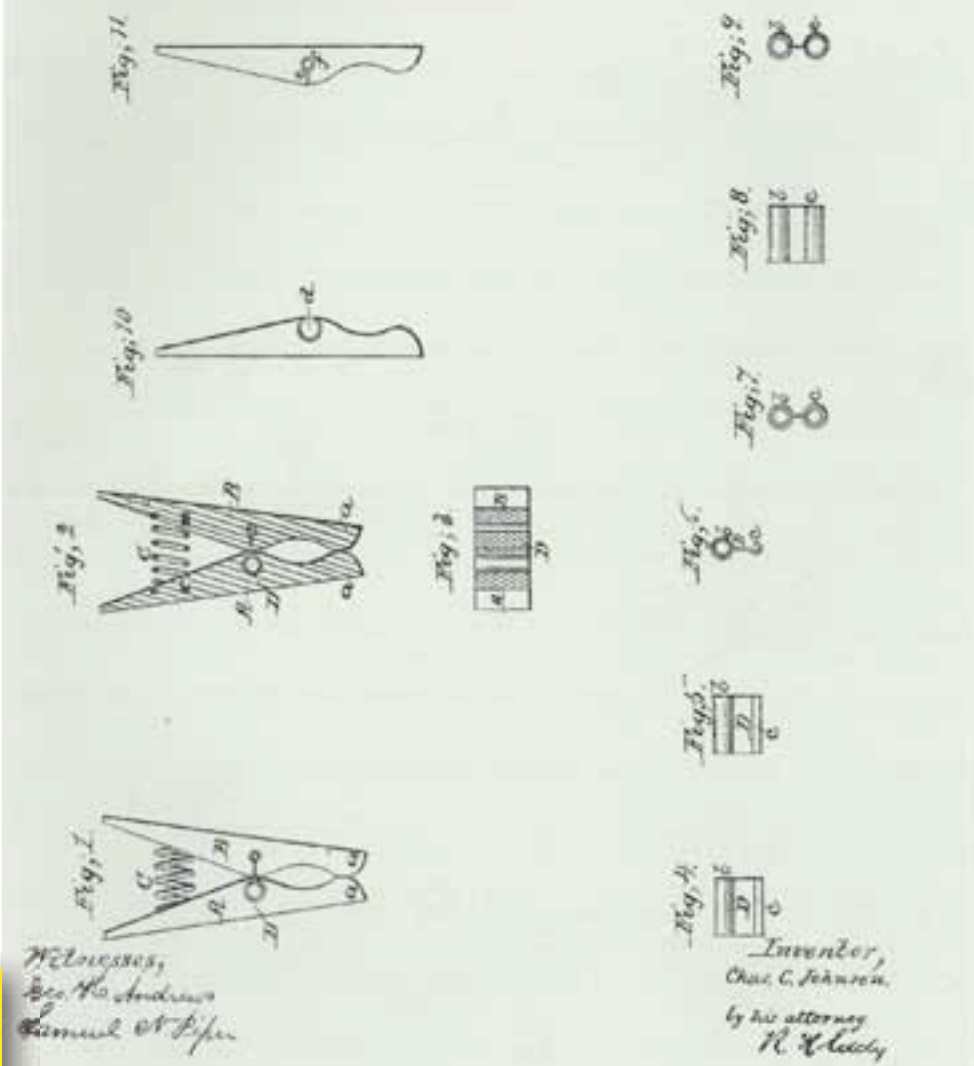
PHAIDON DESIGN CLASSICS industrially manufactured objects of aesthetic value and timeless quality. 1. definitive models of lasting influence and enduring significance. 2. objects that are innovative in their use of new materials and with technological advances with beautiful design. 3. objects characterized by simplicity, balance and purity of form. 4. objects that are perfect in their design and have remained unchanged since their creation. WWW.PHAIDON.COM

PHAIDON

**004**  
 Saw-Back Windsor Chair (c.1780s)  
 Designer Unknown  
 Various c.1780s to present



*C.C. Johnson,*  
*Clothes Pin,*  
*Nº 63,393. Patented Apr. 2, 1867.*



**016**  
 Clothes Peg (1850s)  
 Designer Unknown  
 Various 1850s

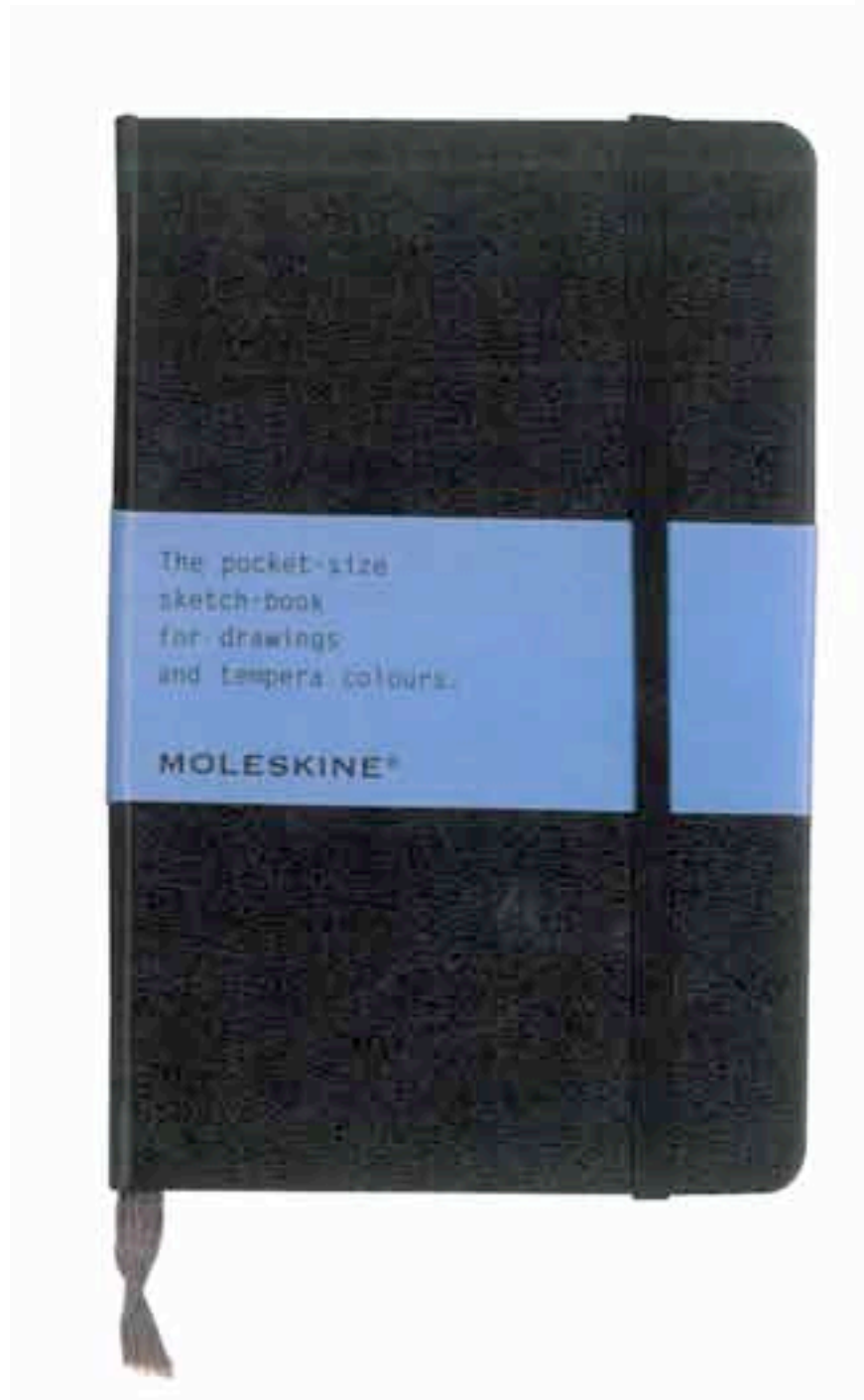


**001**  
**333**

PHALDON DESIGN CLASSICS Industrially manufactured objects of aesthetic value and timeless quality. A definitive history of lasting influence and enduring craftsmanship. A design that has transcended its time and continues to inspire and inform the design process.

PHALDON





**C17**  
 Moleskine Notebook (c.1850)  
 Designer Unknown  
 Angepinque Sirei (Tour) c.1850 to 1880  
 Meta & Mada 1888 to present



**001-333**  
 PHAIDON DESIGN CLASSICS industrially manufactured objects of aesthetic value and timeless quality. 1 define the history of lasting influence and enduring significance. 2 objects that are innovative in their use of new materials and with technological advances with beautiful design 3 objects characterized by simplicity, balance and purity of form. 4 objects that are perfect in their design and have remained unchanged since their creation. WILLIAM DAM, PHAIDON





**THE "APOLLO"**  
Height of seat, 15, 4 in.; depth of seat, 18, 9 in. Total height, 25.



SEATS SUPPLIED BY CASTLE FOR H.M. OFFICE OF WORKS, THE MALL, LONDON.



**THE "SALAMANDER"**  
Height of seat, 15, 4 in.; depth of seat, 18, 9 in. Total height, 25.



**THE HANNIBAL "B"**  
Height of seat, 15, 4 in.; depth of seat, 18, 9 in. Total height, 25, 11 in.



**THE "WIDGEON"**  
Height of seat, 15, 4 in.; depth of seat, 18, 9 in. Total height, 25, 9 in.



**C26**  
English Arts and Crafts (1900)  
Designs  
VINTAGE PAPER COLLECTION

**C35**

Peugeot Pepper Mill (1874)  
Jean-Frédéric Peugeot (1770-1822)  
Jean-Pierre Peugeot (1768-1852)  
Peugeot 1874 to present

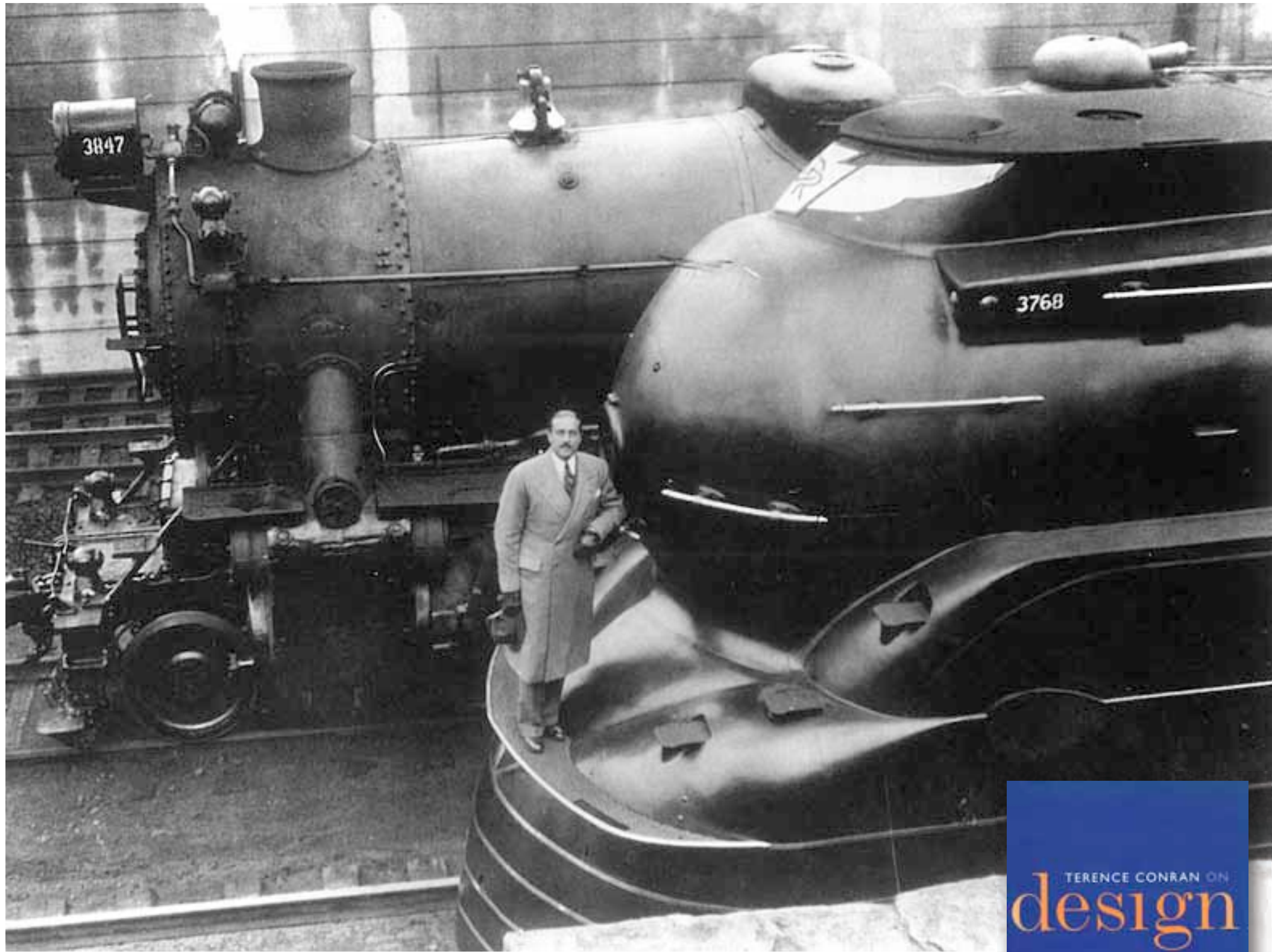


**CC1**  
**-333**

PHAIDON DESIGN CLASSICS industrially manufactured objects of aesthetic value and timeless quality. 1 defines the reality of being, balance and enduring significance. 2 asserts that are innovative in their use of new materials and with technological advances with beautiful design 3 objects characterized by simplicity, balance and purity of form. 4 objects that are perfect in their design and have remained unchanged since their creation. PHAIDON 2005.

PHAIDON





Raymond Loewy design







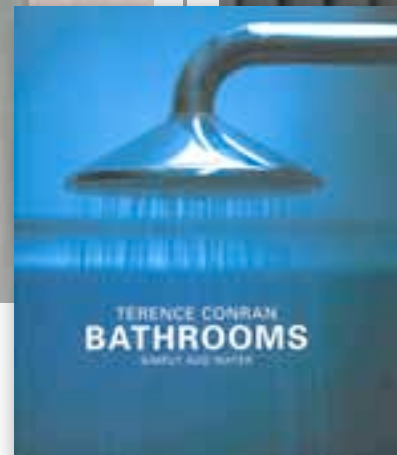
Hong Kong





Palm Jumeirah, Dubai, Emiraty Arabskie



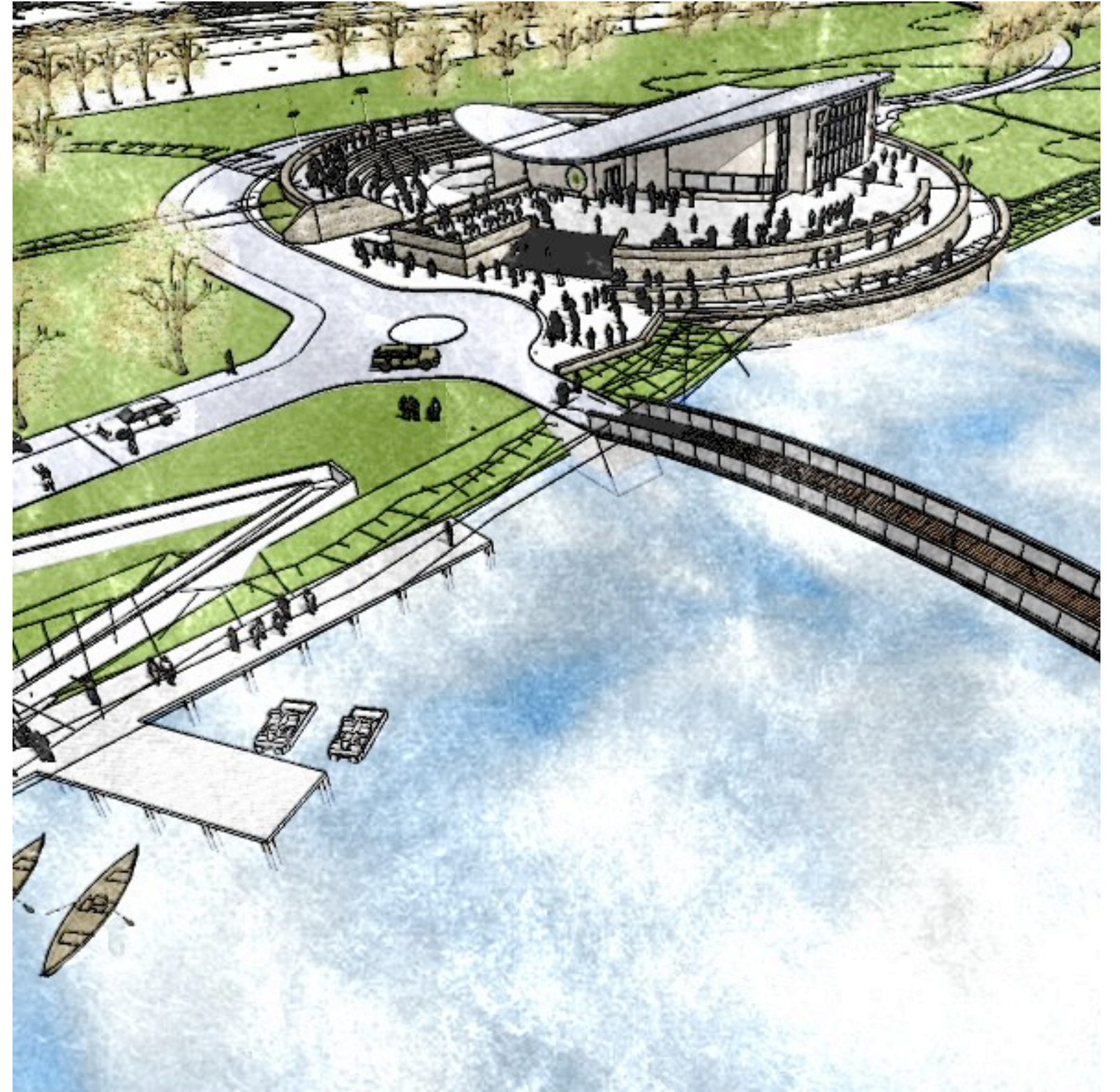
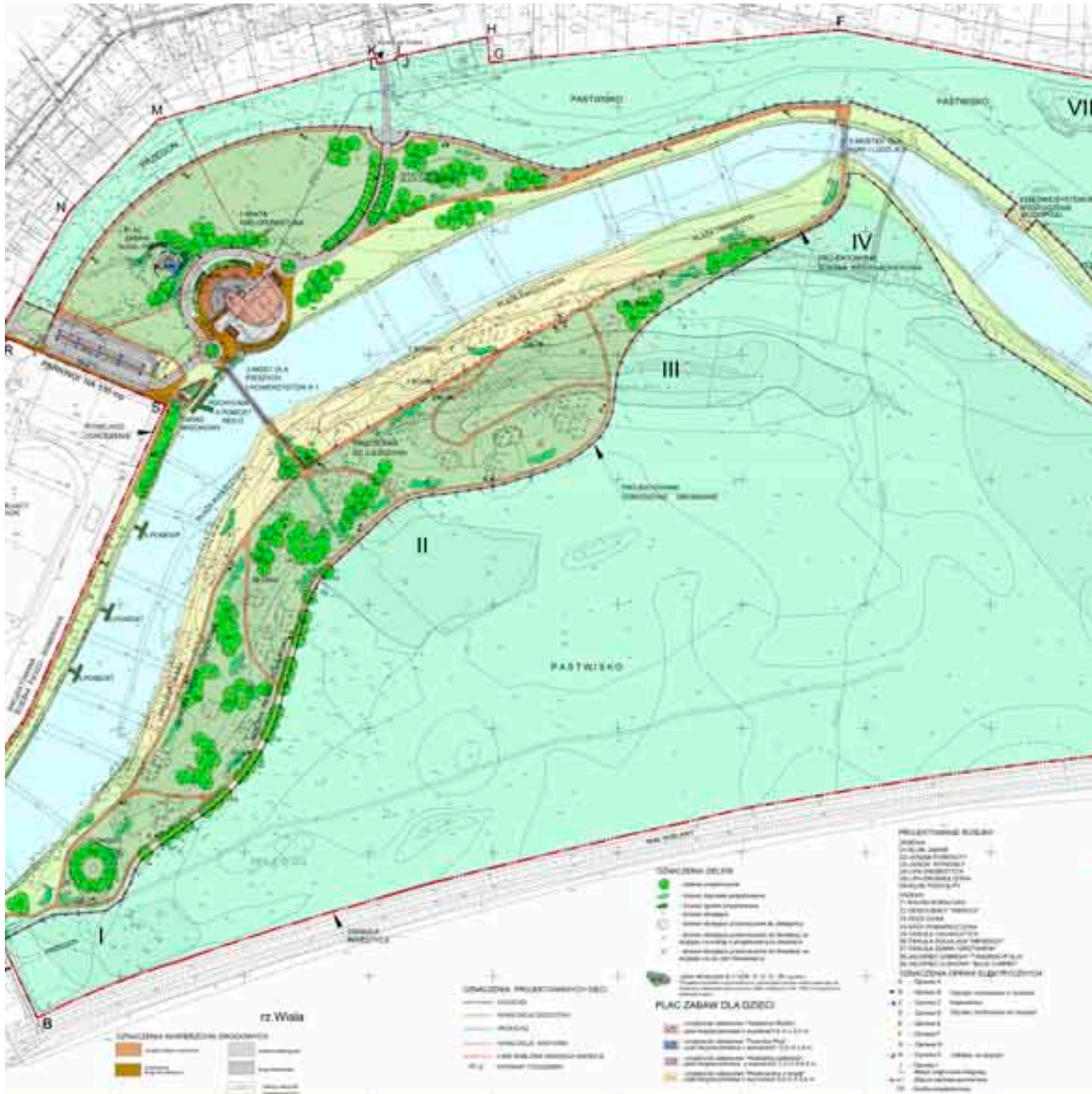






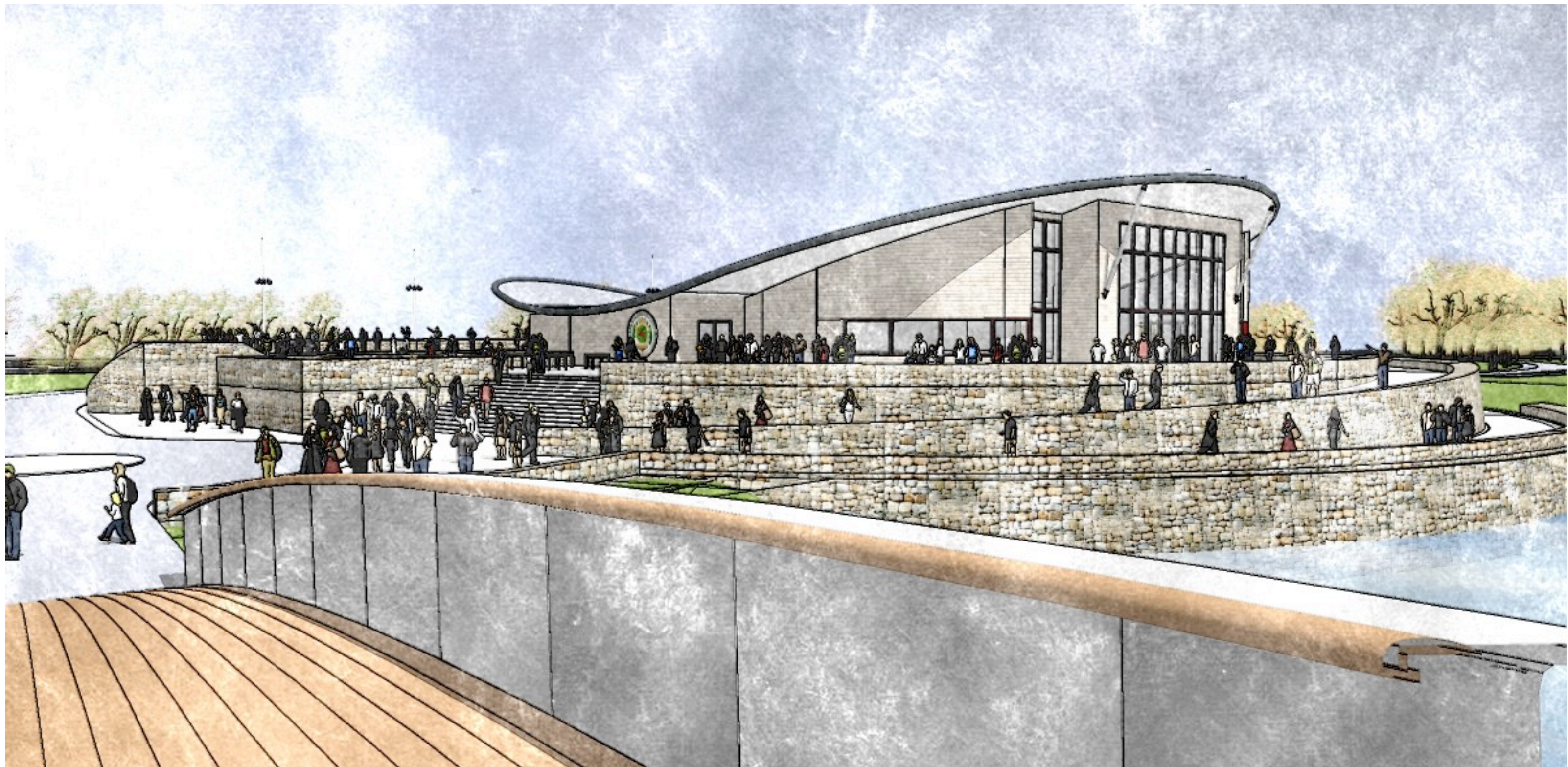
Edward Hartwig





Stężyca





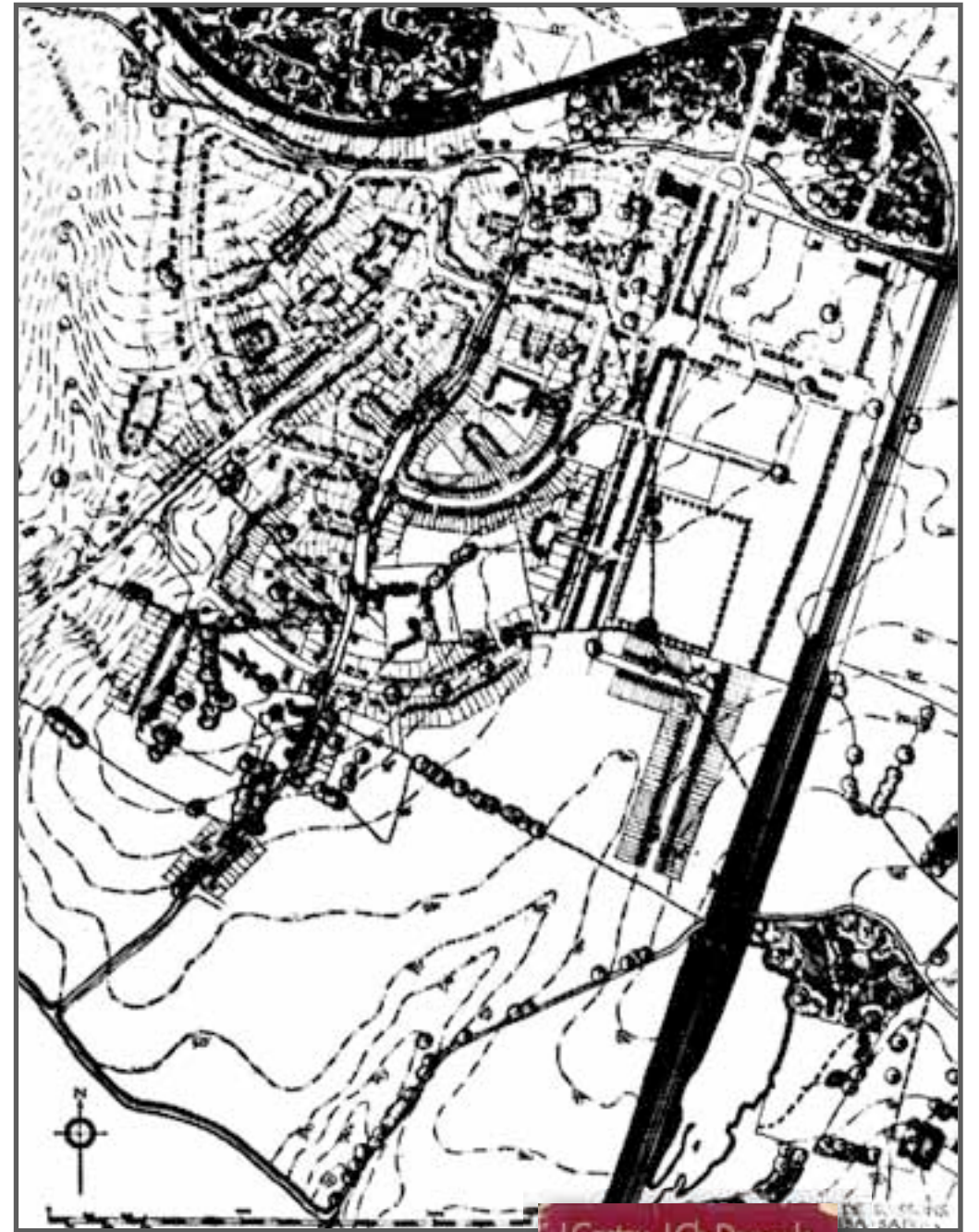
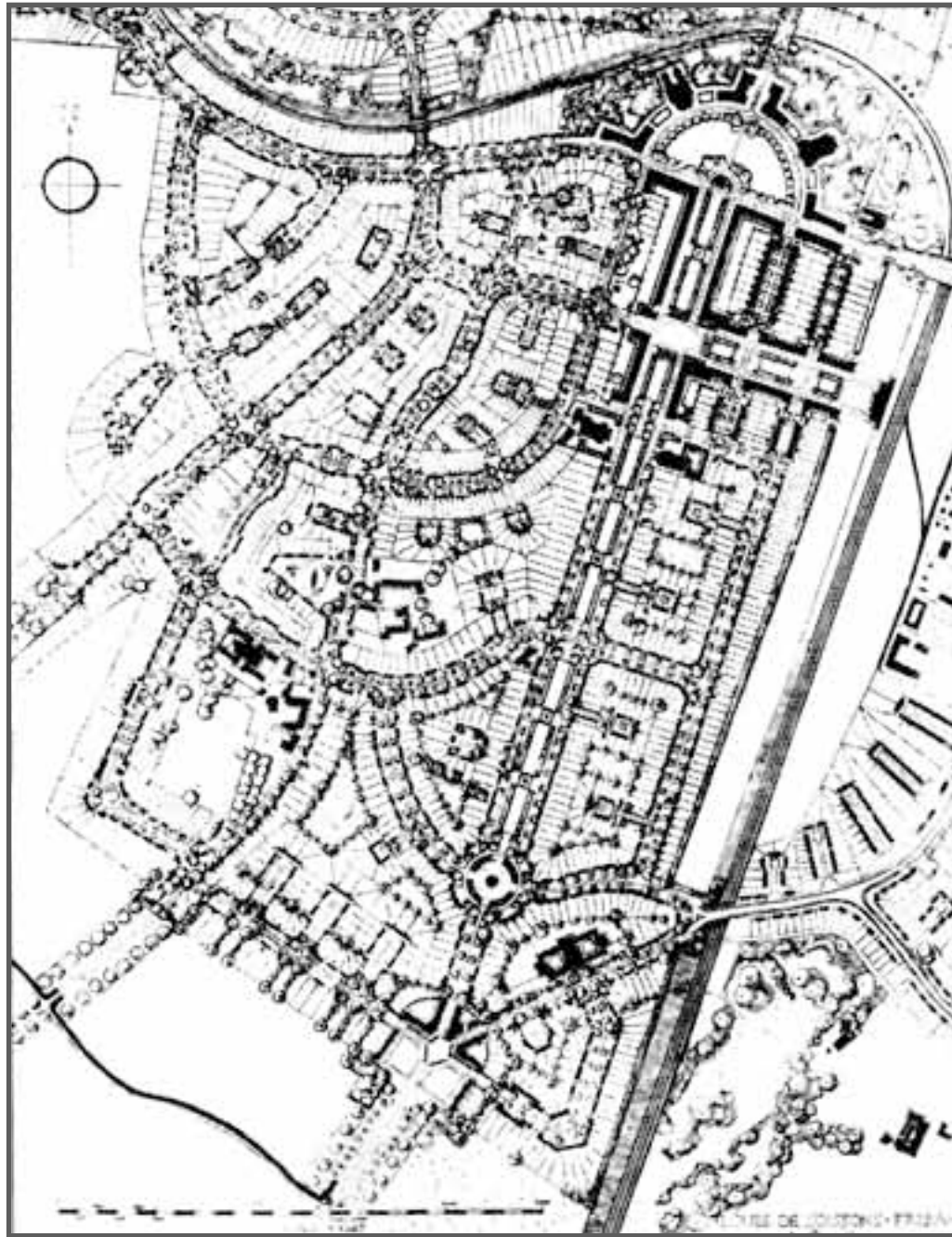
Stężyca





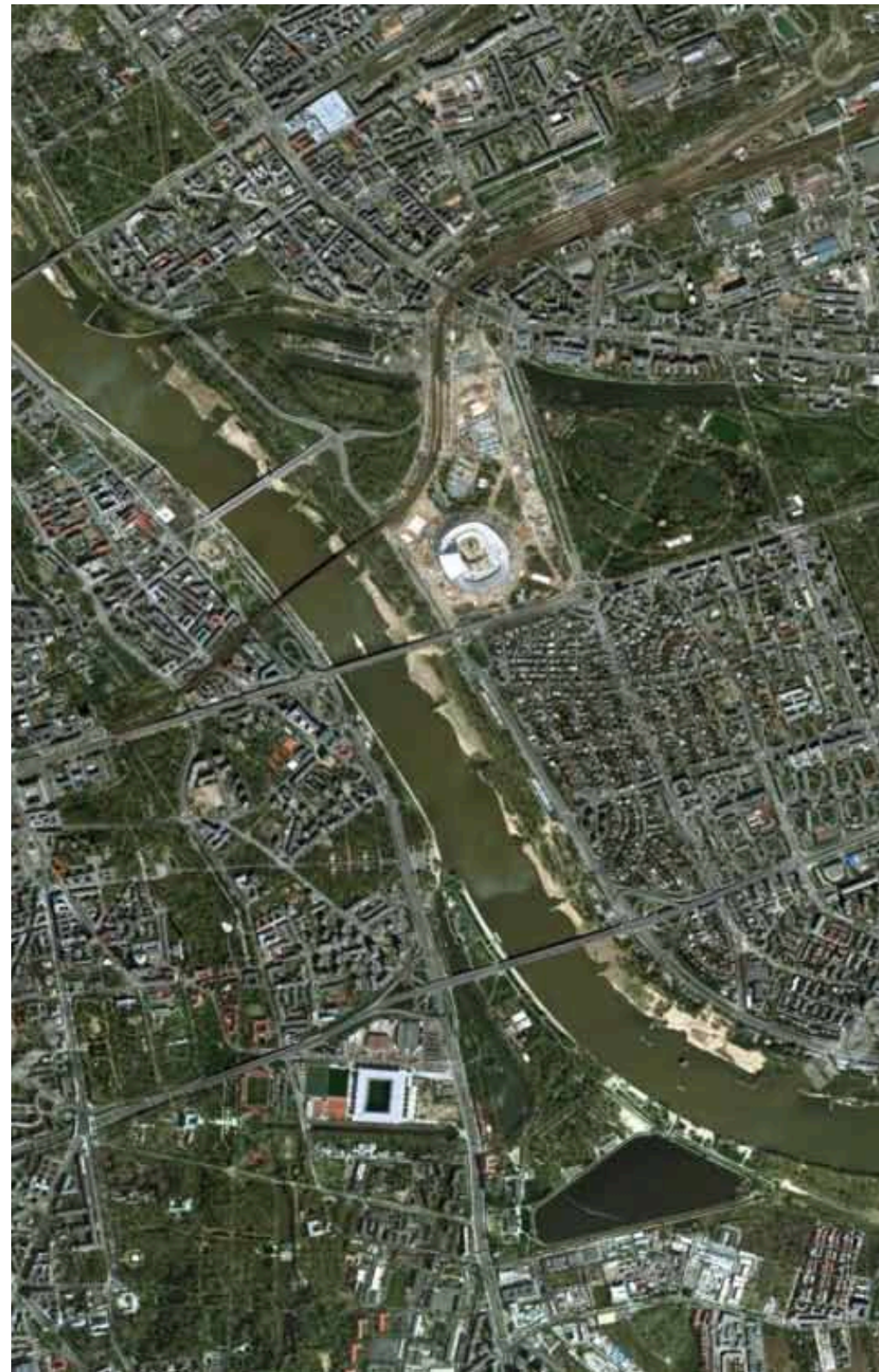
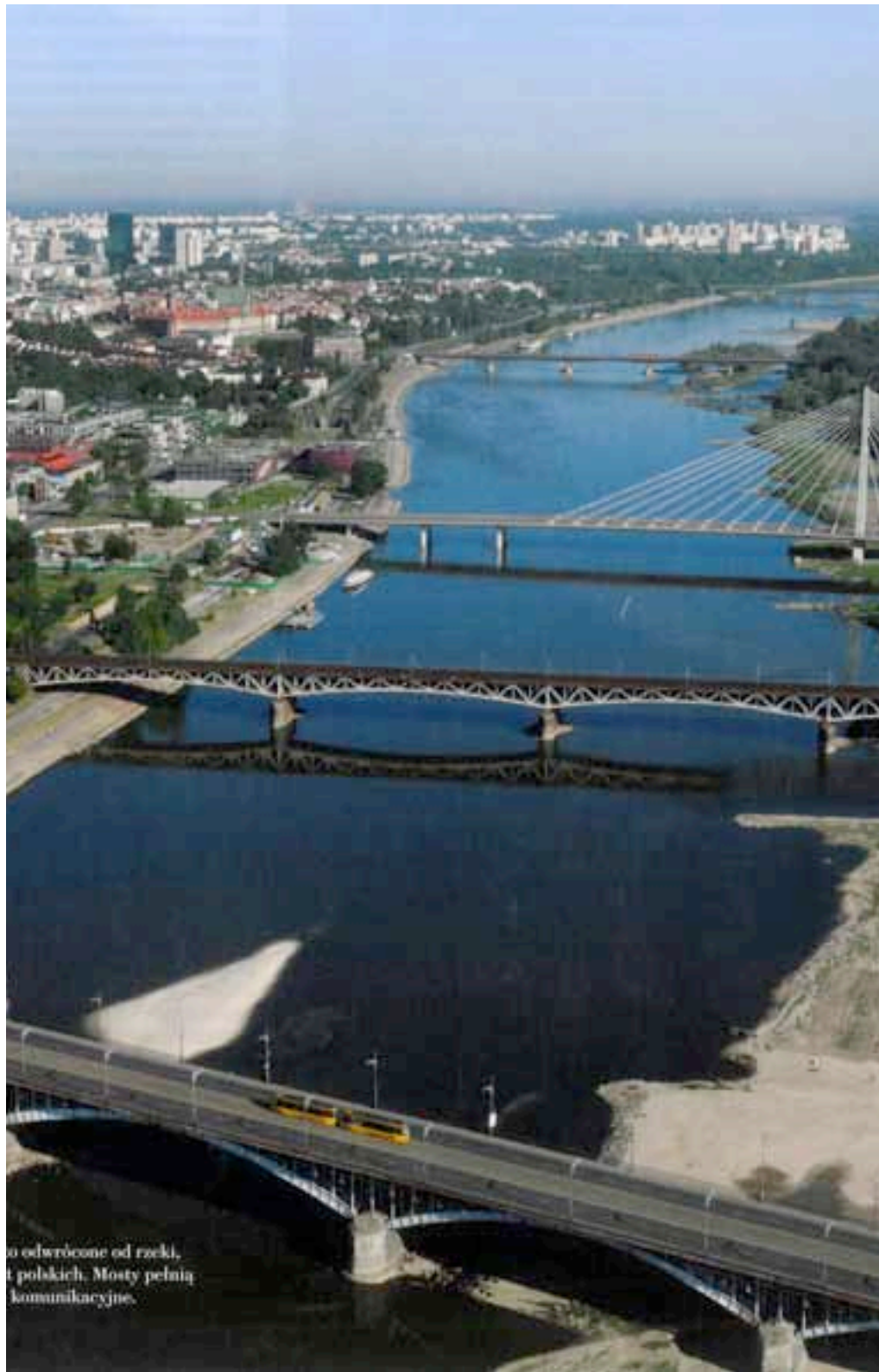
Stężyca





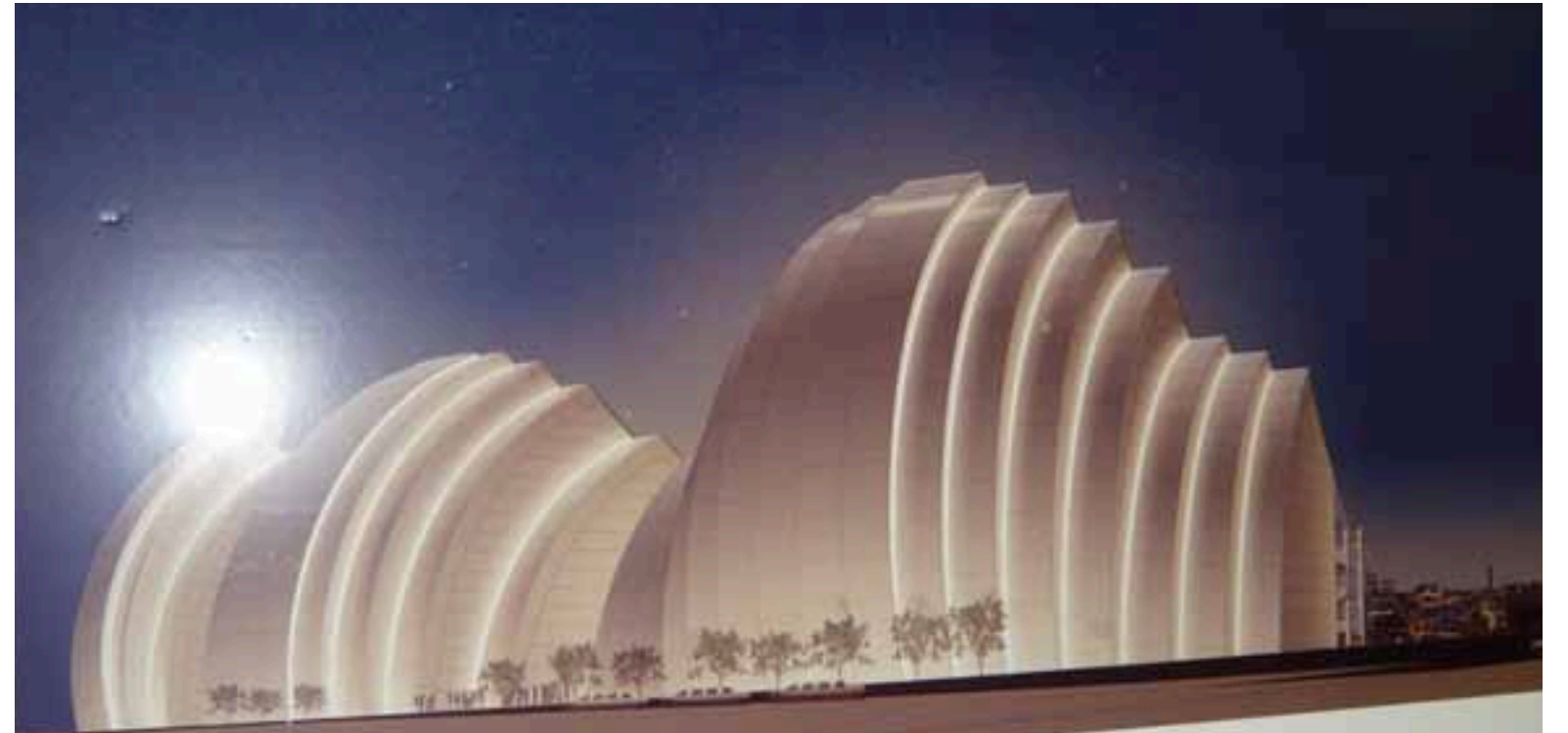
Welwyn Garden City wg planu Louis de Soisson





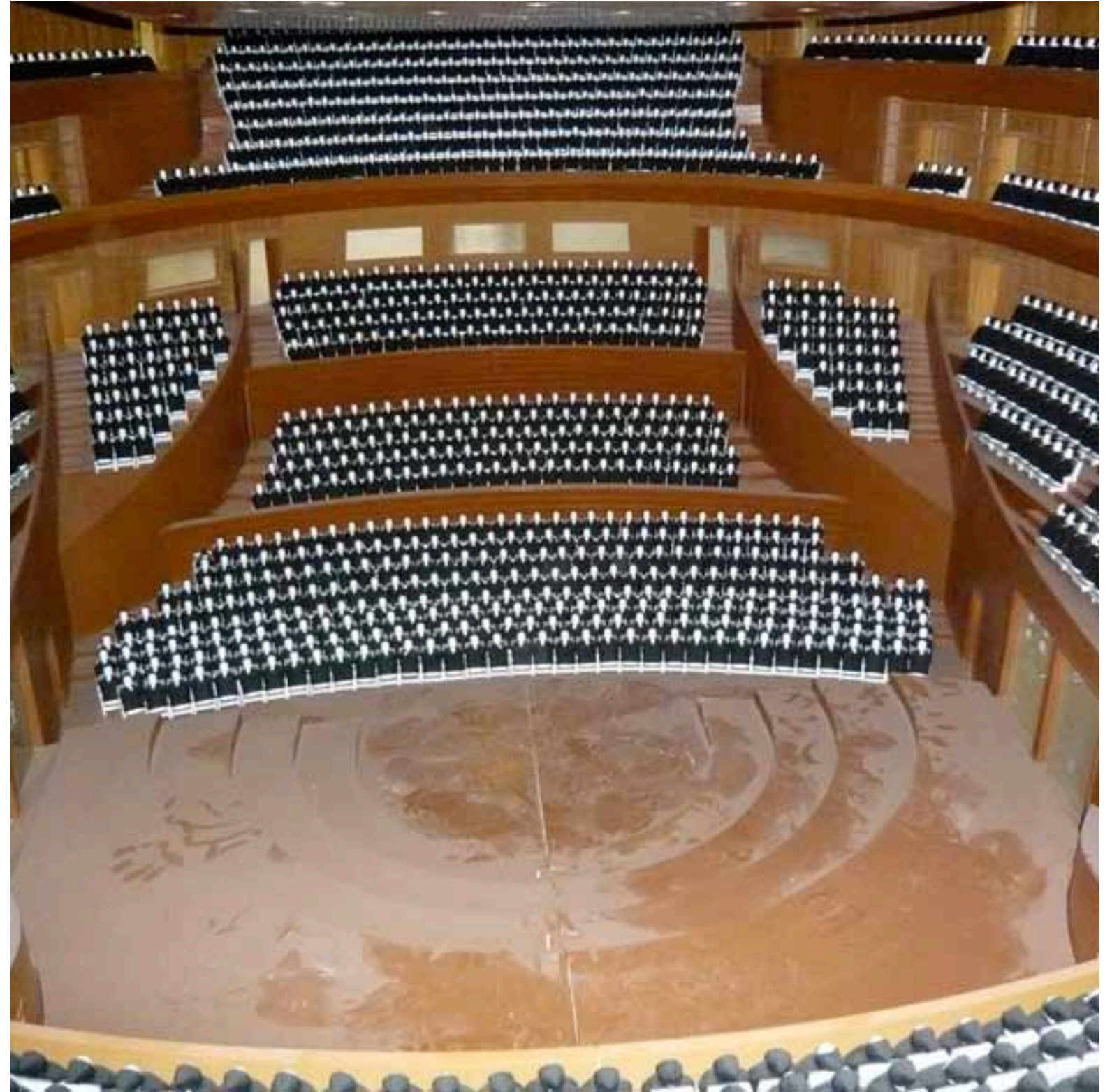
Warszawa tyłem do Wisły





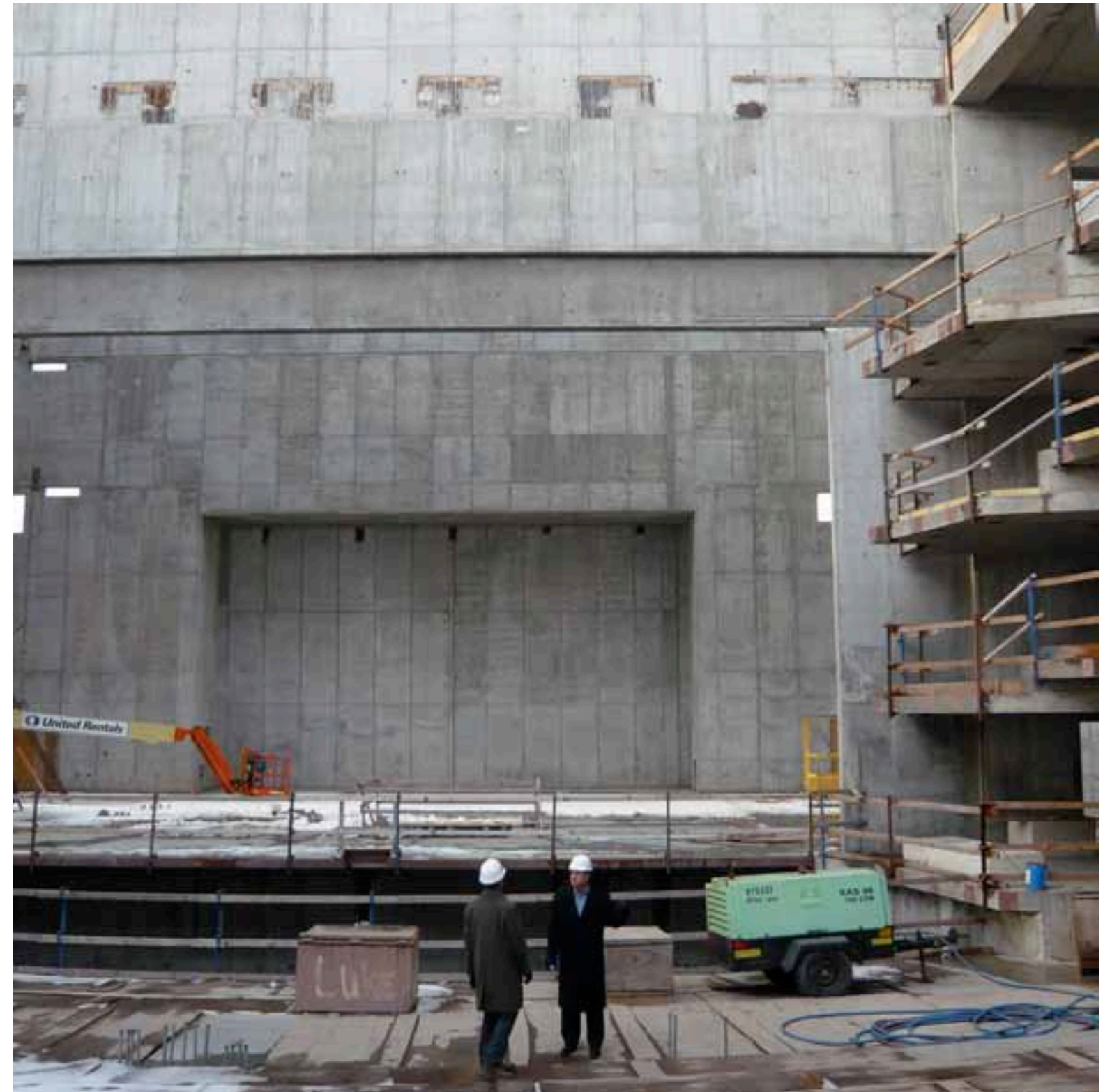
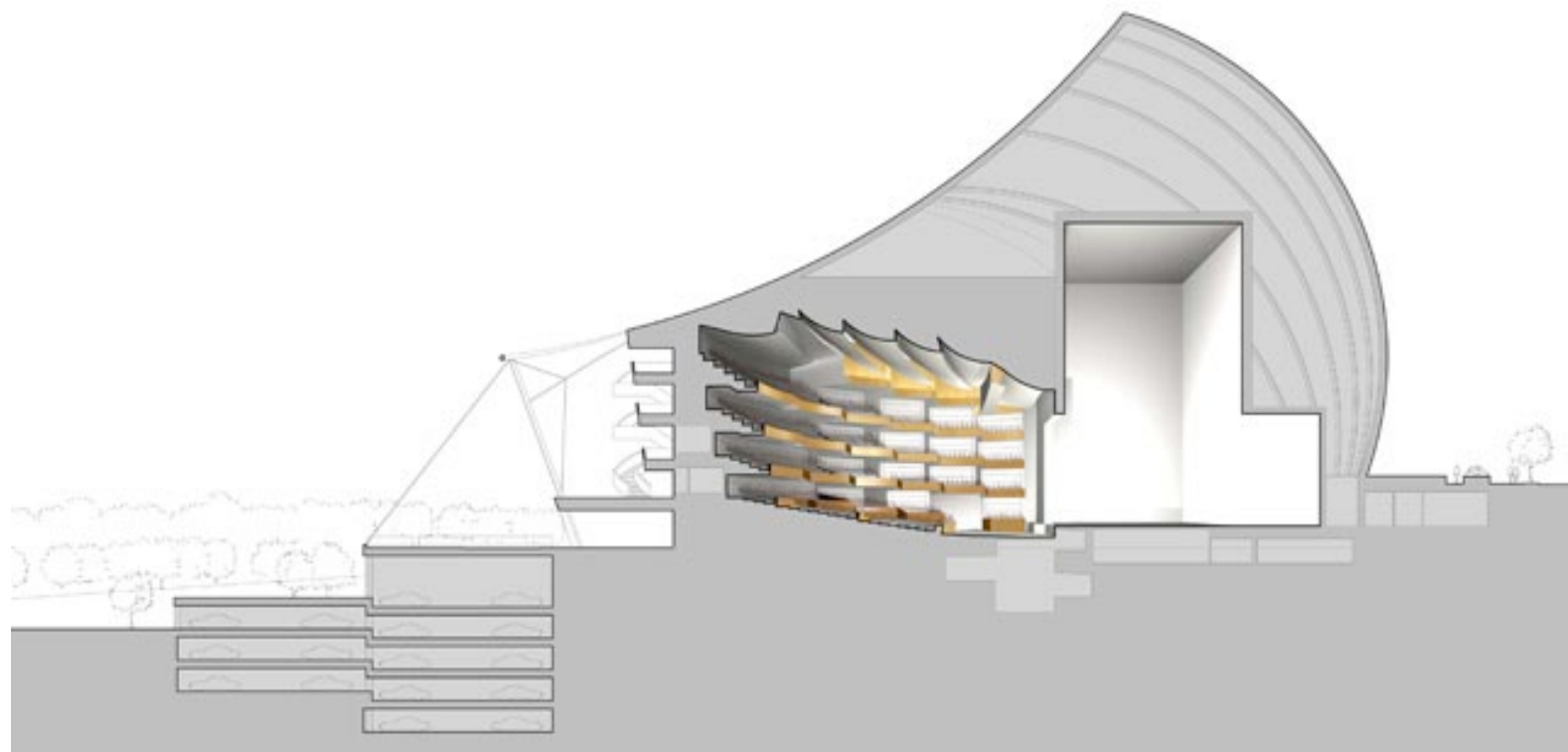
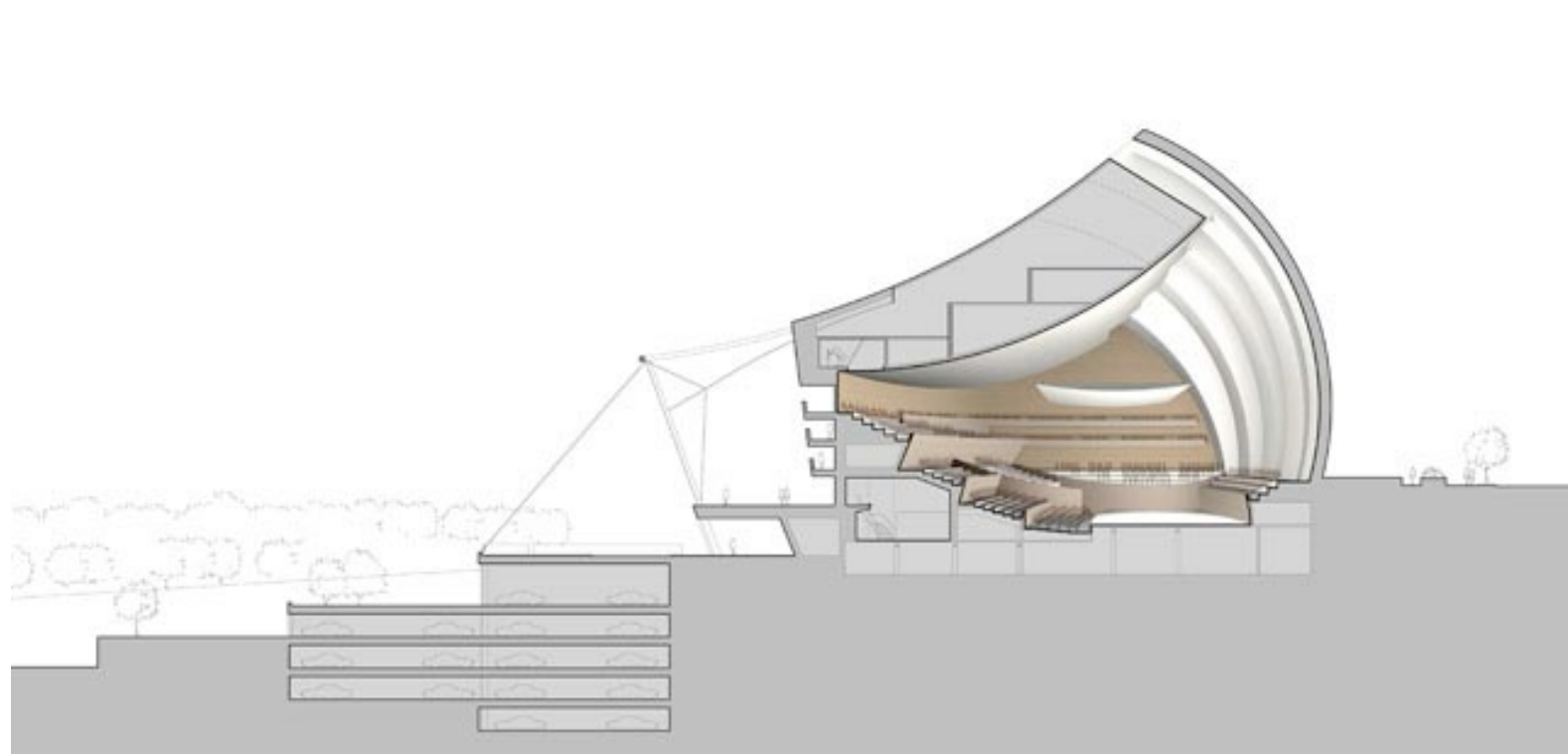
Kansas City rok 2009 – Centrum Kauffmana Sztuk Stosowanych, Moshe Safdie





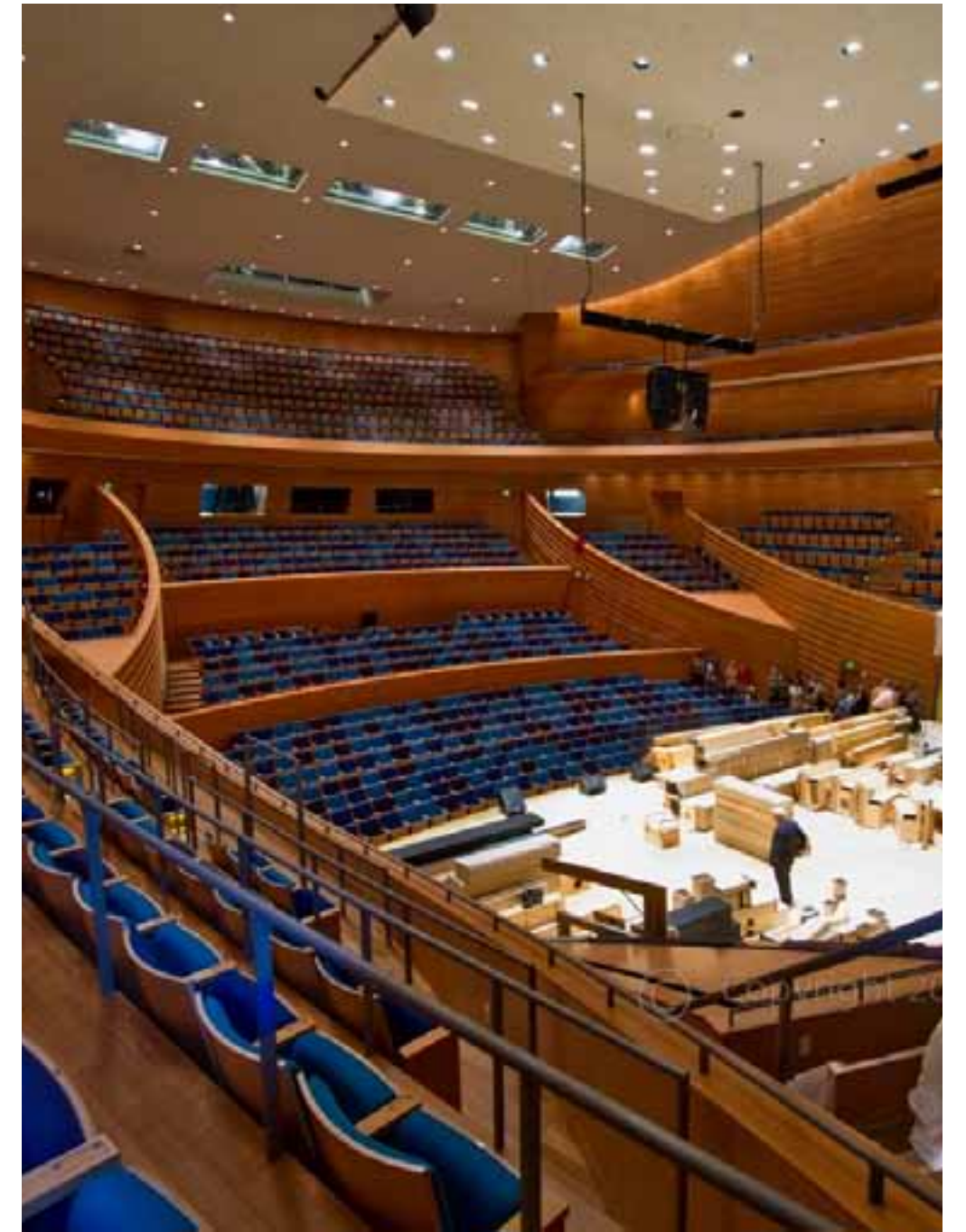
Kansas City rok 2009 – Centrum Kauffmana Sztuk Stosowanych, Moshe Safdie





Kansas City rok 2009 – Centrum Kauffmana Sztuk Stosowanych, Moshe Safdie





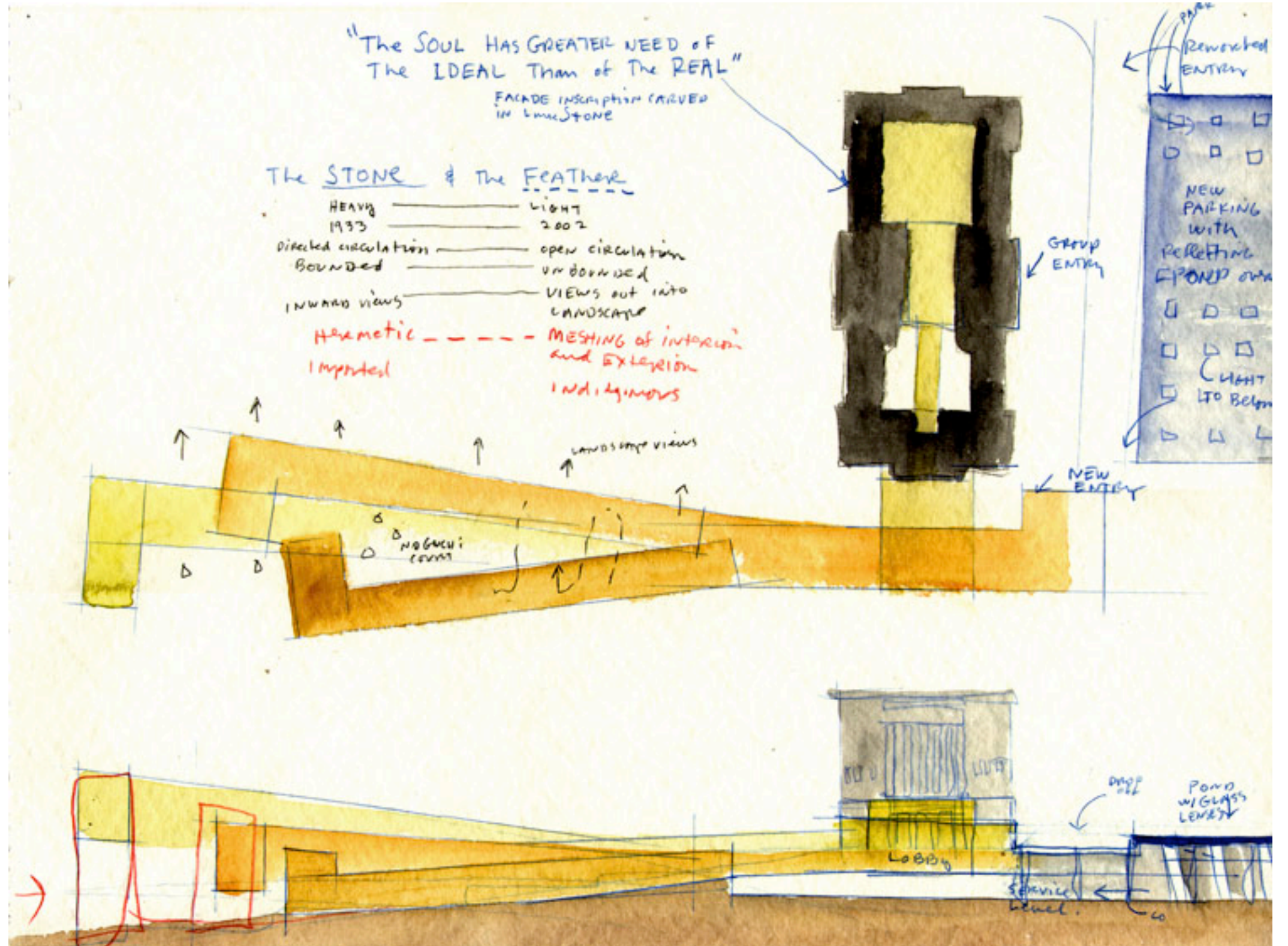
Kansas City rok 2011 – Centrum Kauffmana Sztuk Stosowanych, Moshe Safdie





Muzeum sztuk pięknych Nelsona-Atkinsa w Kansas City, Steven Holl. 2007





Muzeum sztuk pięknych Nelsona-Atkinsa w Kansas City, Steven Holl. 2007





Muzeum sztuk pięknych Nelsona-Atkinsa w Kansas City, Steven Holl. 2007





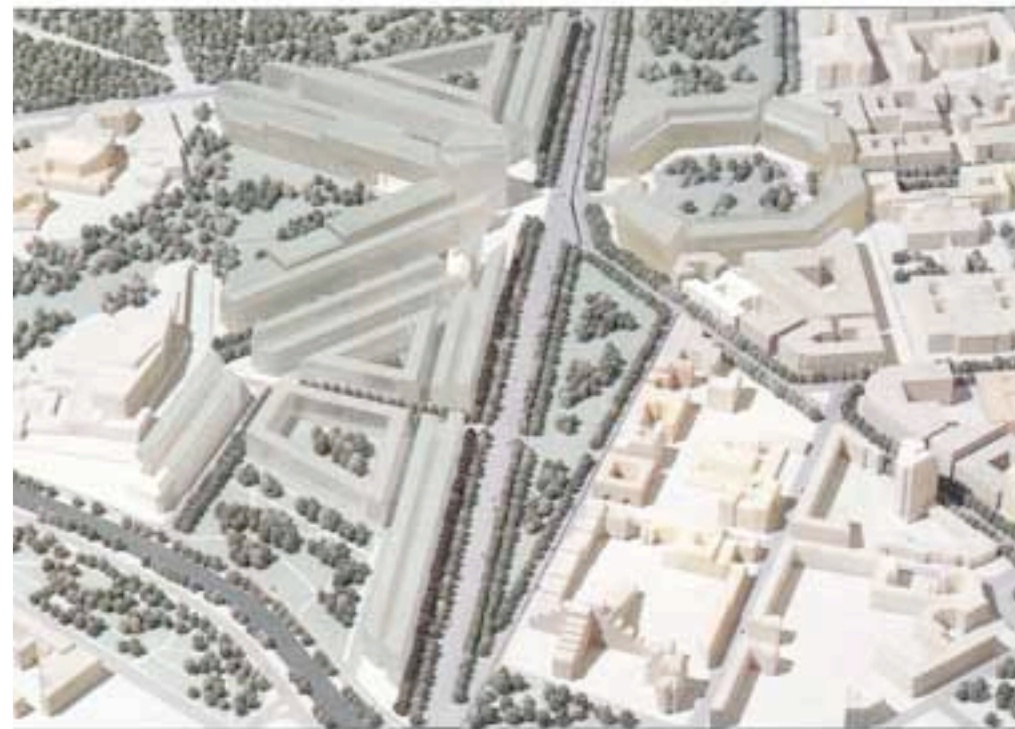
Muzeum sztuk pięknych Nelsona-Atkinsa w Kansas City, Steven Holl. 2007





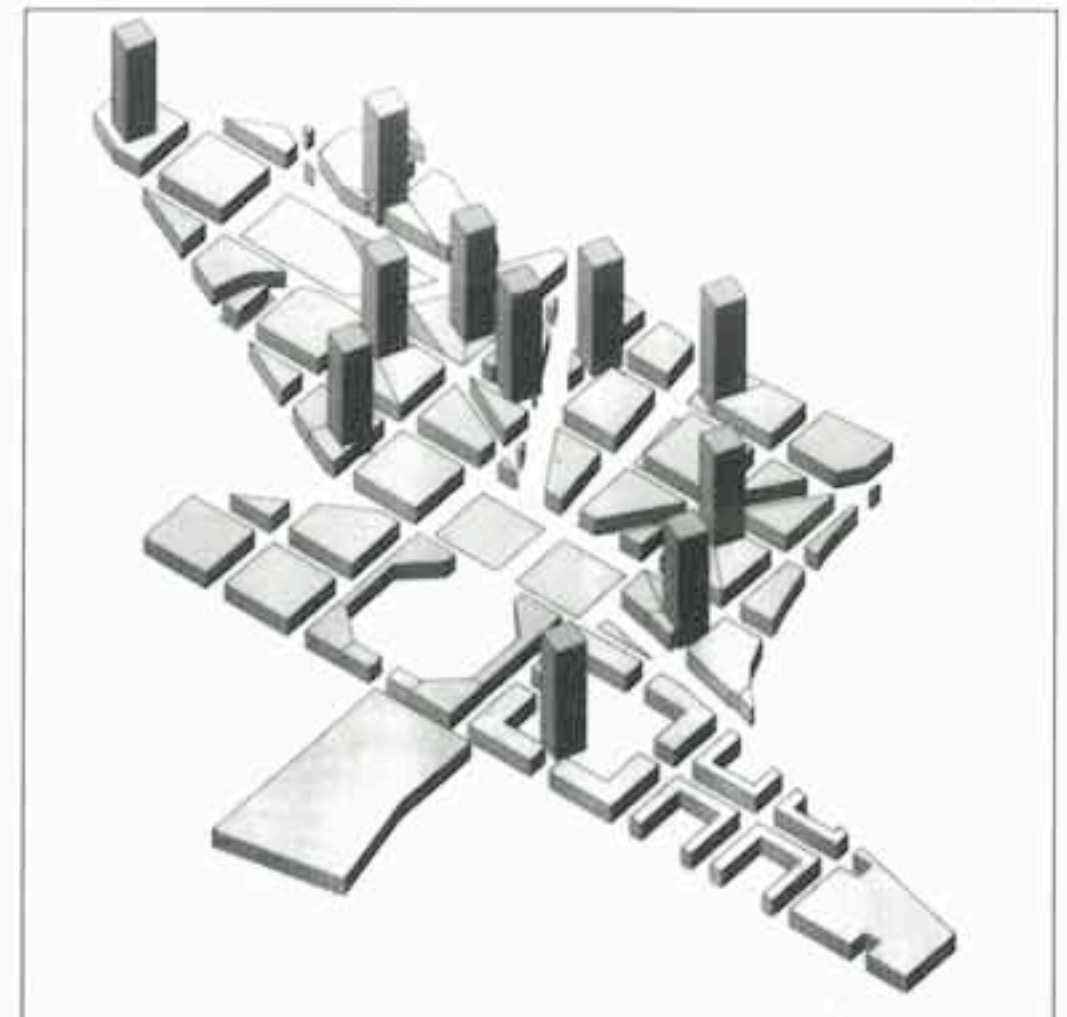
Wystawa w MoMA, Nowy Jork





Berlin





Berlin

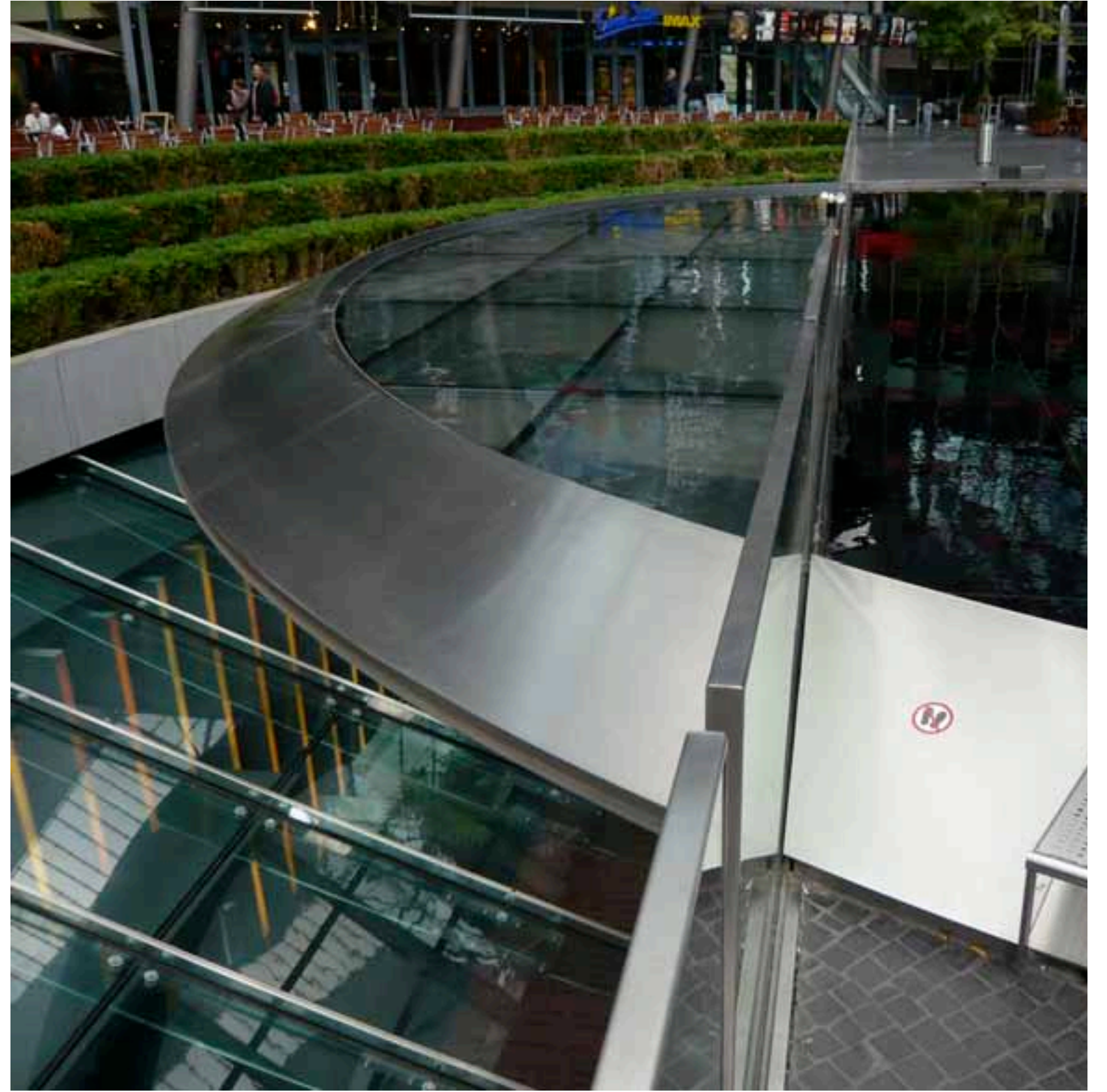






Sony Center





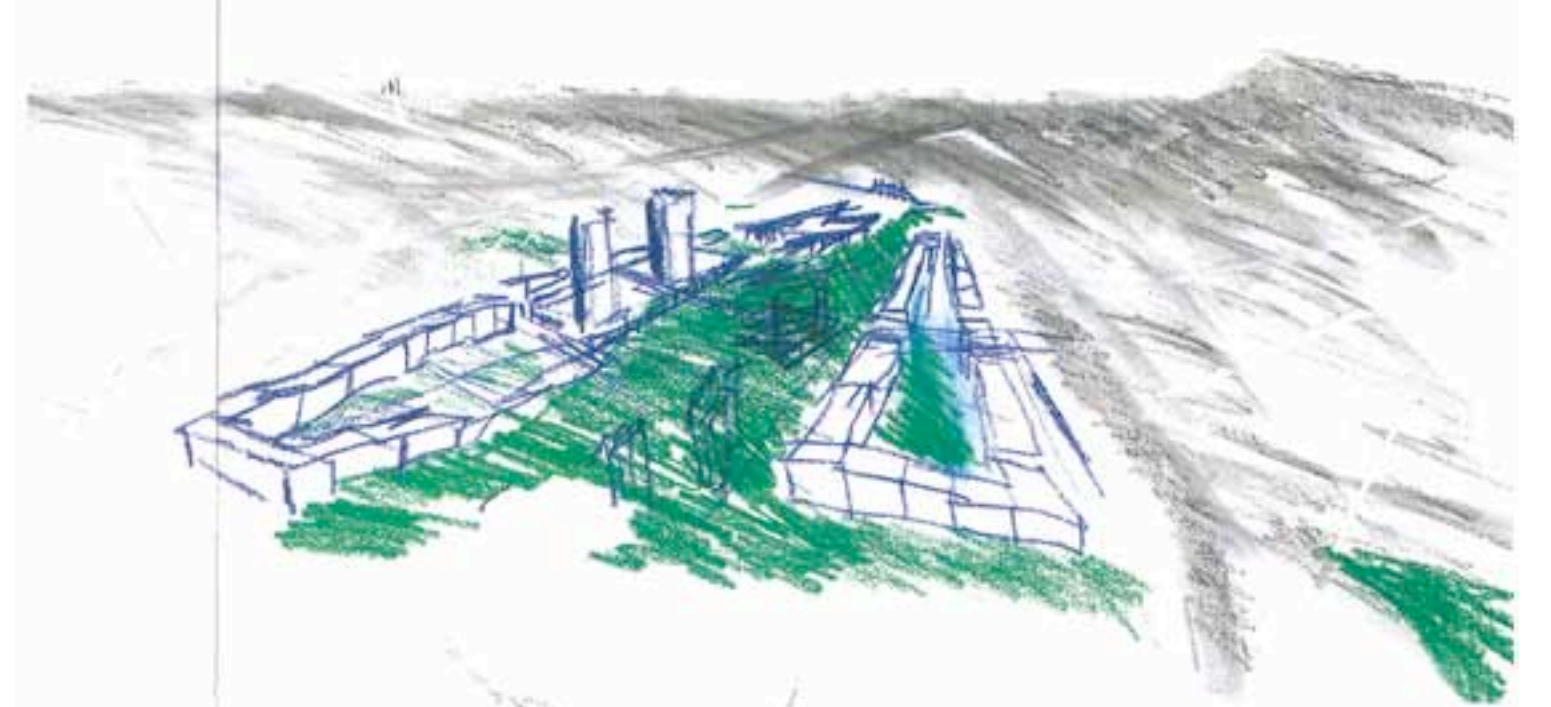
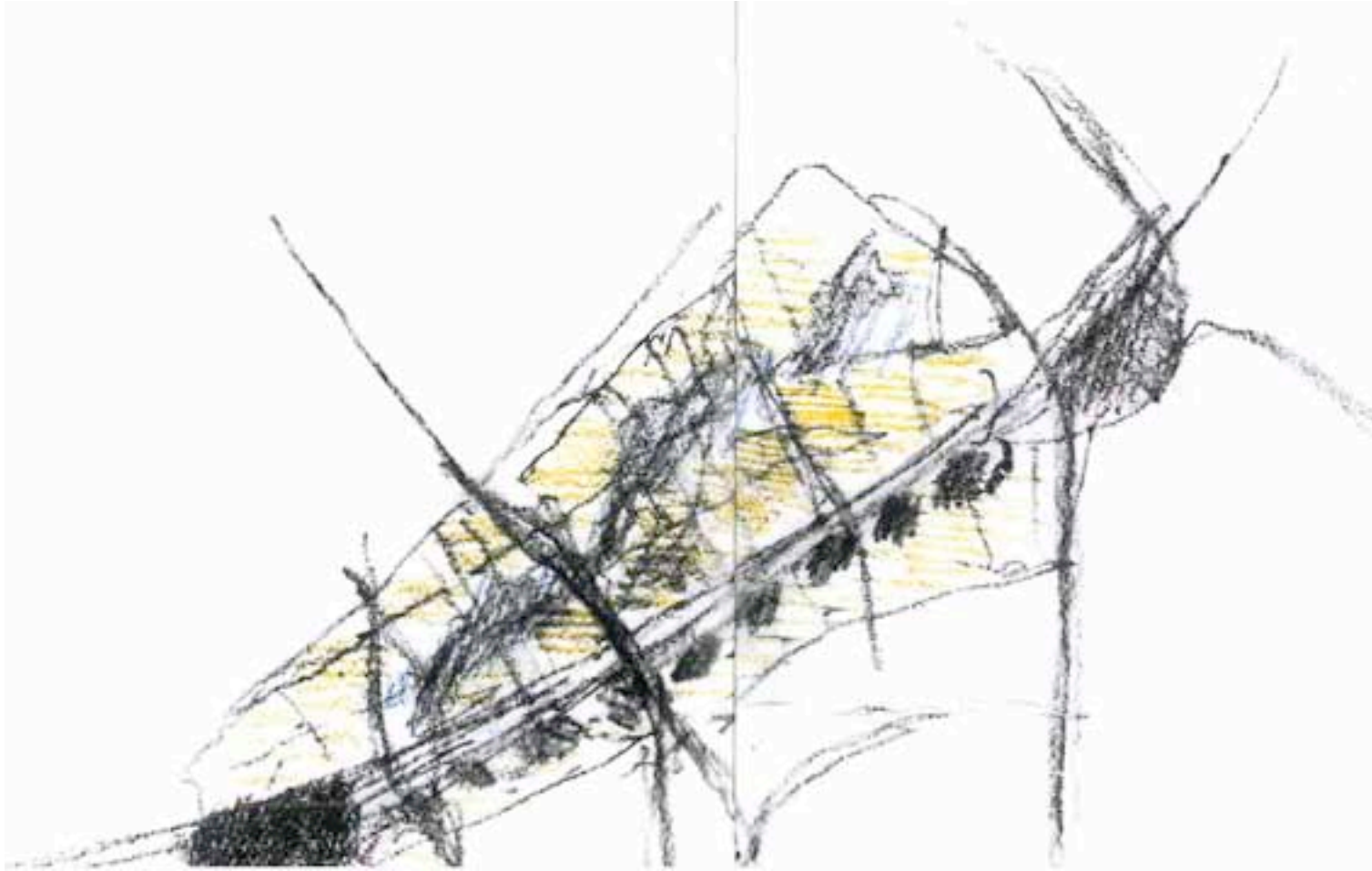
Sony Center





Barcelona, lata 80





Barcelona transfer





Barcelona transfer



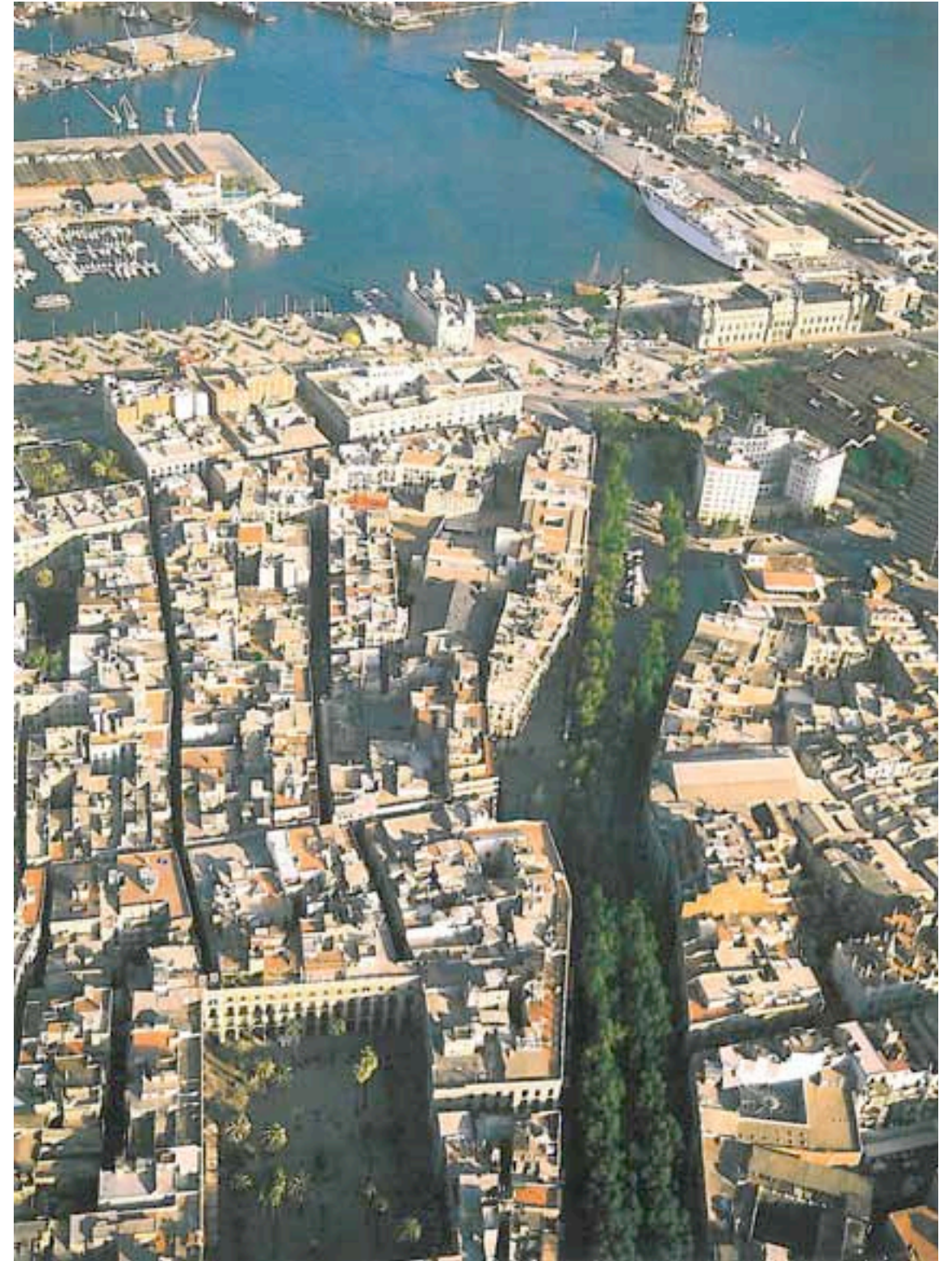


Barcelona transfer





Barcelona



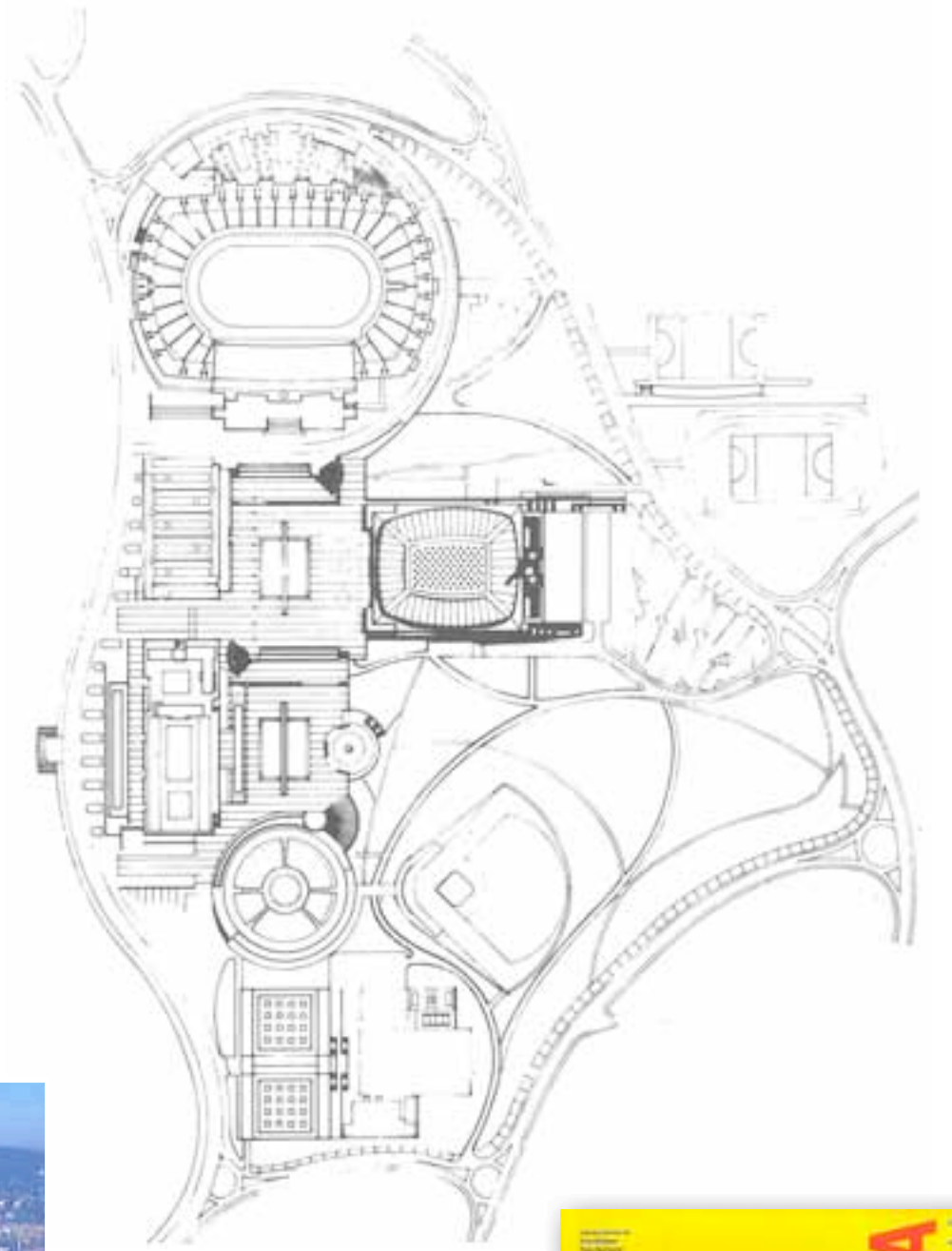




Barcelona

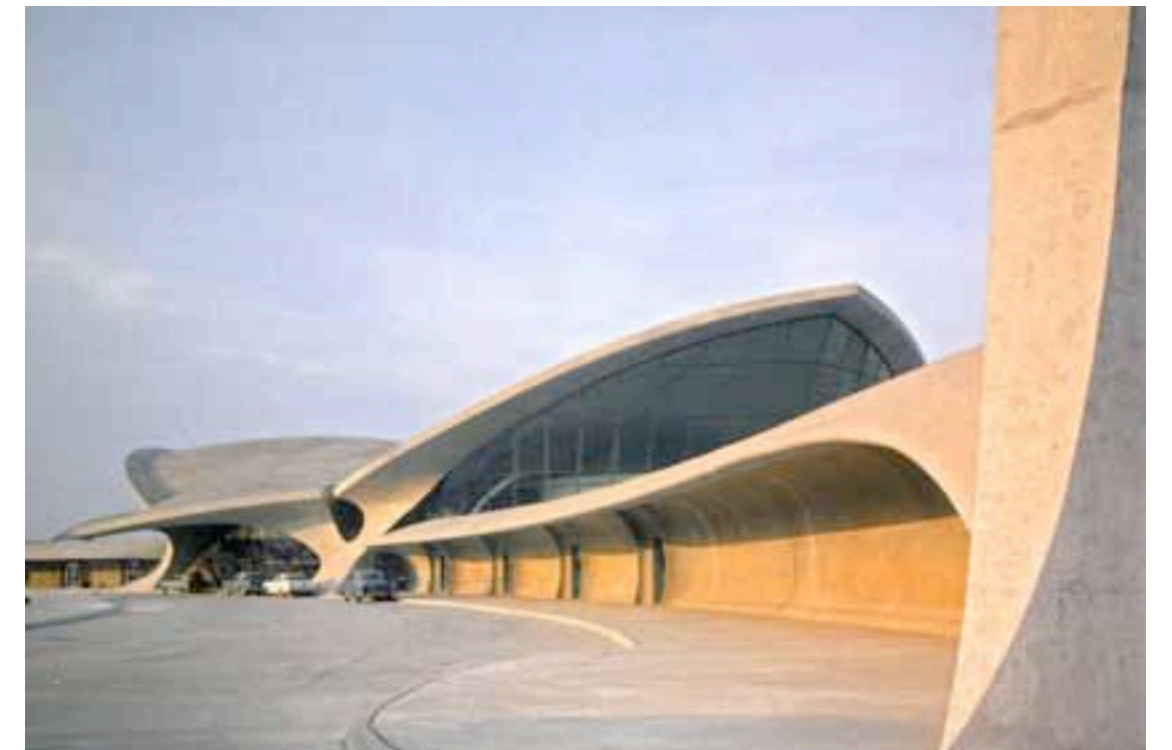
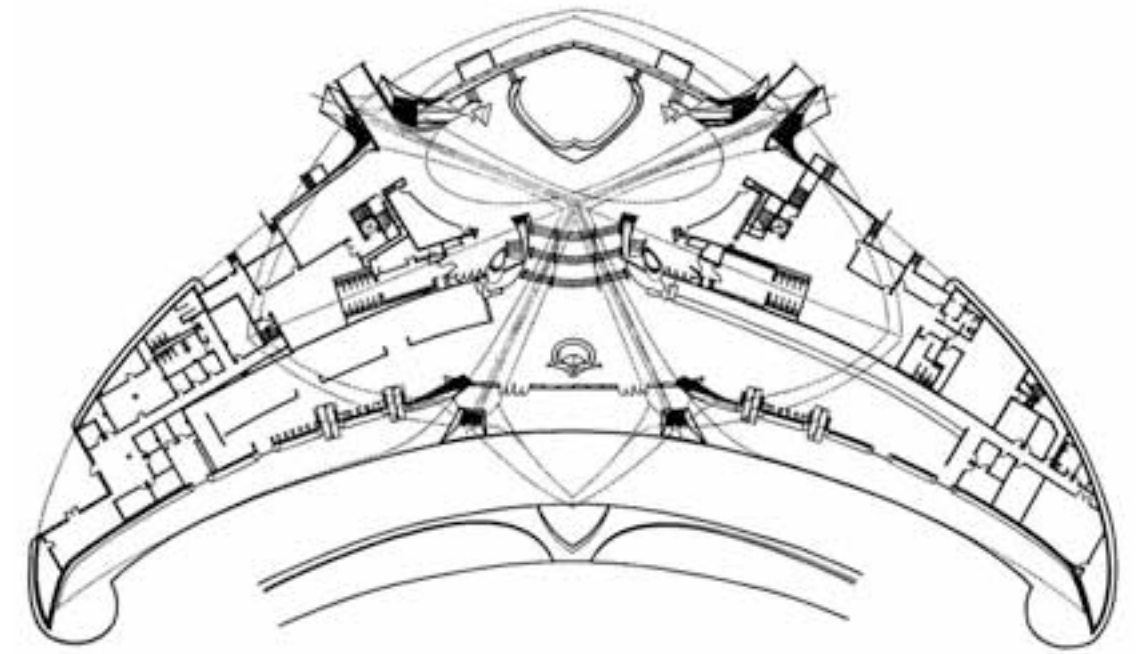






Barcelona





Terminal na Lotnisku Kennedy'ego w Nowym Jorku 1956-62, Eero Saarinen





Map of Spain, main agglomerations, location of Bilbao







Aerial map of Greater Bilbao, main municipalities and important areas highlighted







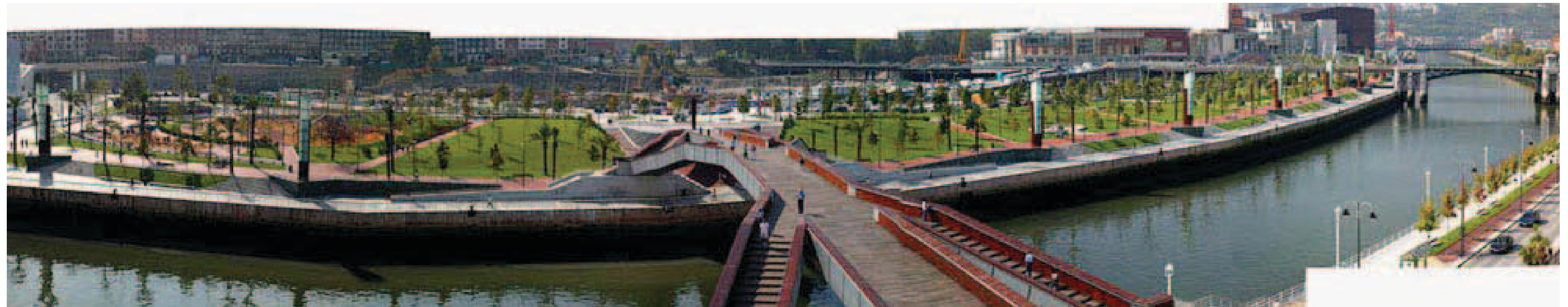
Bilbao





Bilbao





Bilbao



1992



1999



Bilbao, Abandoibarra





Bilbao, Abandoibarra





New City w Warszawie



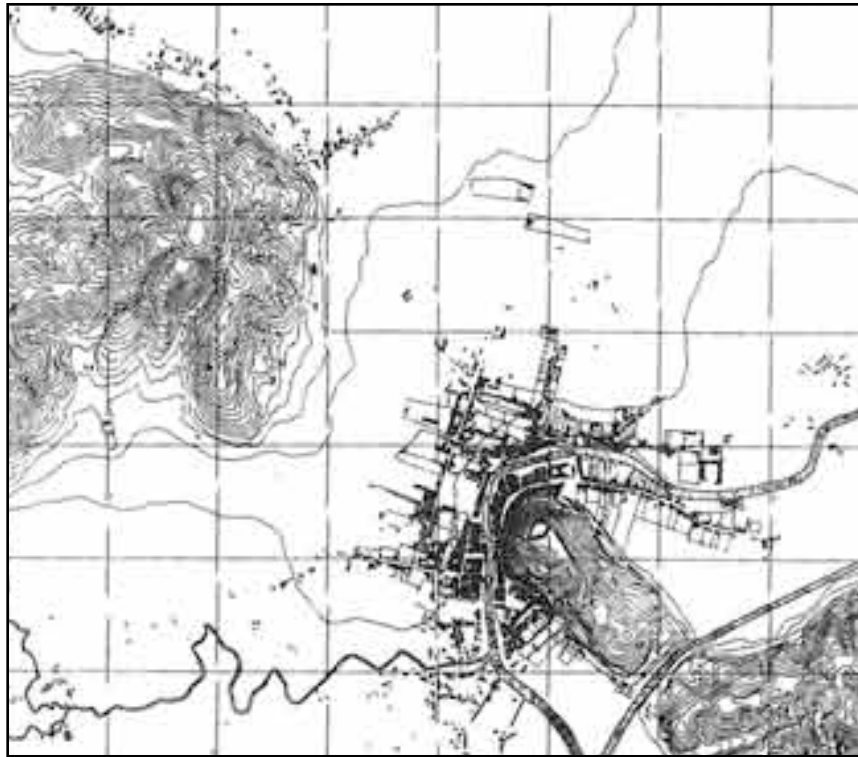


Dworzec południowy w Warszawie

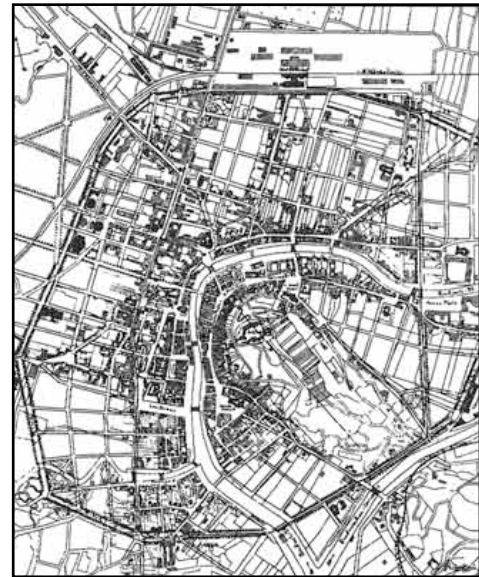




# Jože Plečnik



Ljubljana w 1829



Plan rozwoju Maxa Fabianiego z 1895



Studium developerskie Plečnika z 1929



Ljubljana dziś





Ljubljana Jože Plečnika







Biblioteka Uniwersytecka i Narodowa w Ljubljanie, Jože Plečnik





Biblioteka Uniwersytecka i Narodowa w Ljubljanie, Jože Plečnik





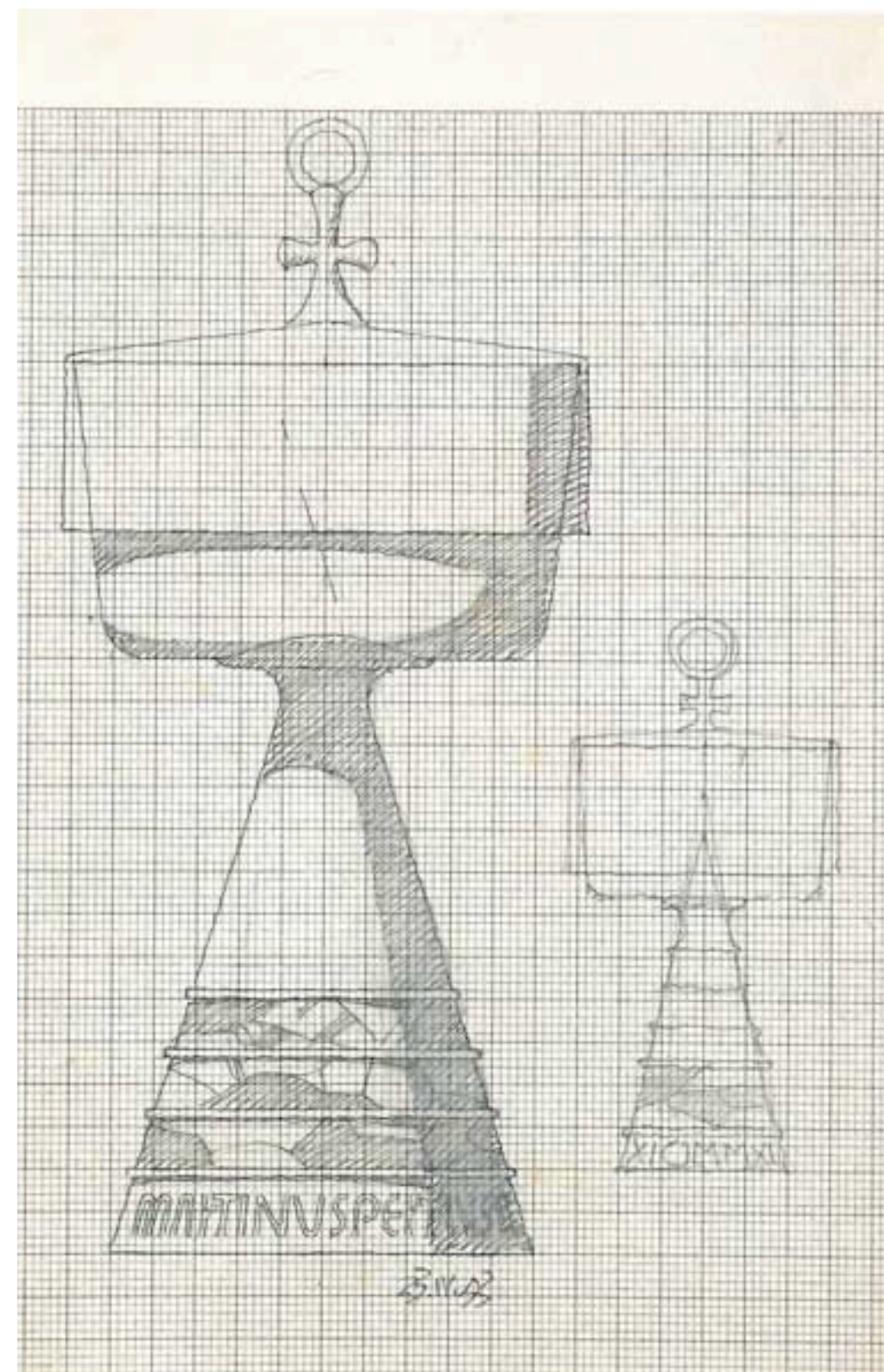
Biblioteka Uniwersytecka i Narodowa w Ljubljanie, Jože Plečnik





Biblioteka Uniwersytecka i Narodowa w Ljubljanie, Jože Plečnik



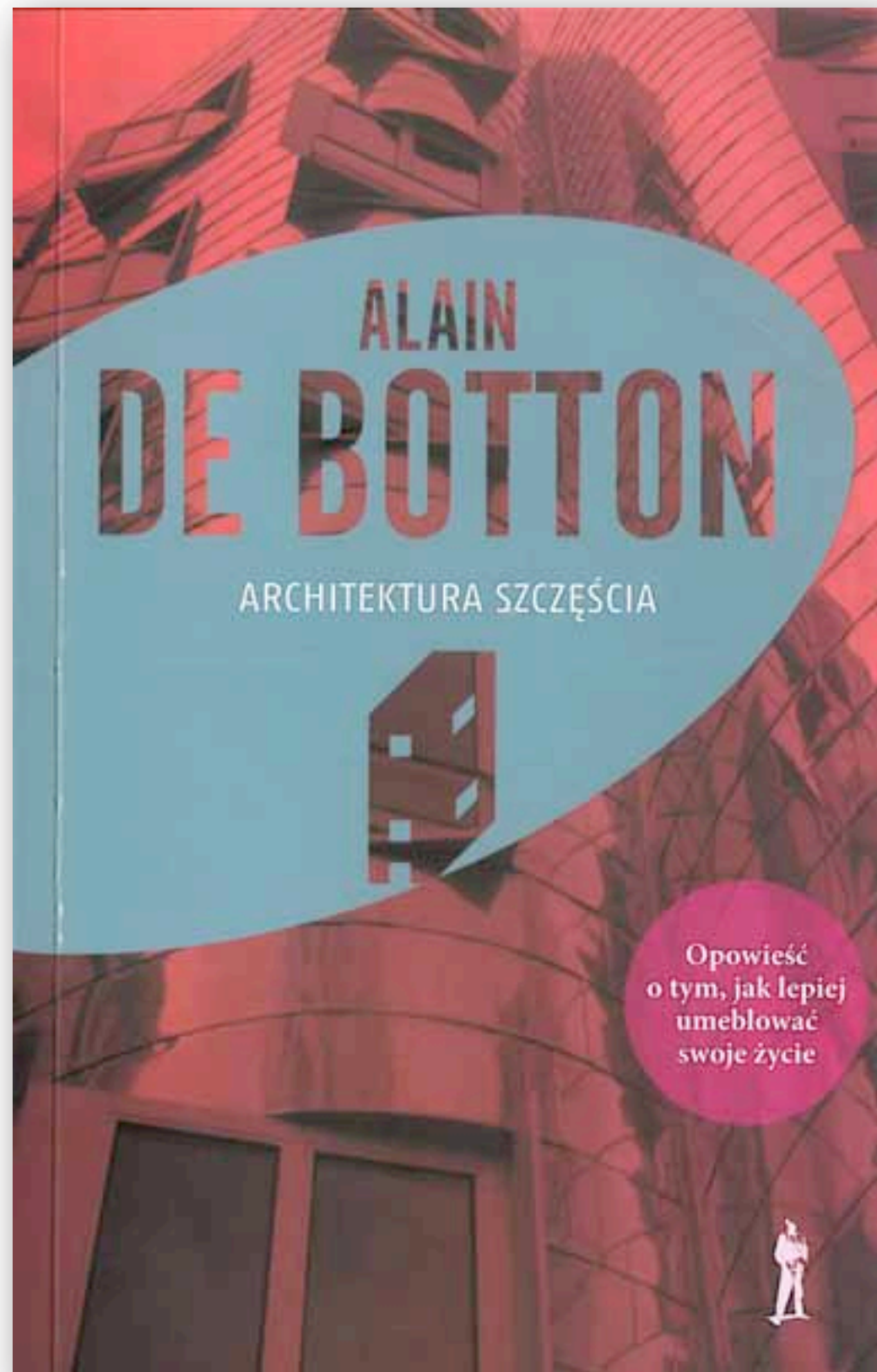






Ljubljana Jože Plečnika







Dziękuję za uwagę

---